

# Actuator

17-050351

Distribution by  
DigiKey**DigiKey**<https://digikey.eao.com/p/17-050351>

Your product:

---



## 17-050351 Actuator

### FRONT

Front form:	round
Front dimension:	Ø 9,5 mm
Reflector:	Metal, polished chromium-plated, internal

### MOUNTING

Mounting cut-out:	Ø 8 mm
Design:	raised

### OPERATING-/INDICATION PART

Illumination colour:	Green
----------------------	-------

### ELECTRICAL CHARACTERISTICS

Operation current:	19 mA $\pm$ 15 %
Lumi. Intensity:	32 mcd
Polarity:	Anode (+) Brass plug-in connector Cathode (-) Brass tinned plug-in connector
Operating voltage:	24 V DC $\pm$ 10 %

### MECHANICAL CHARATERISTIC

Tightening torque:	Fixing nut max. 0.2 Nm
Weight:	0.005 kg
Terminal:	Plug-in terminal, 2.8 x 0.8 mm

## AMBIENT CONDITION

<b>Storage temperature:</b>	– 25 °C ... + 80 °C
<b>IP Protection:</b>	IP40 front side, IP65 front side, according to IEC 60529
<b>Operating temperature:</b>	– 20 °C ... + 60 °C

## CERTIFICATE

<b>Conformities:</b>	2011 / 65 / EC (RoHS), 2014 / 35 / EU (230 VAC)
<b>Approbations:</b>	UL

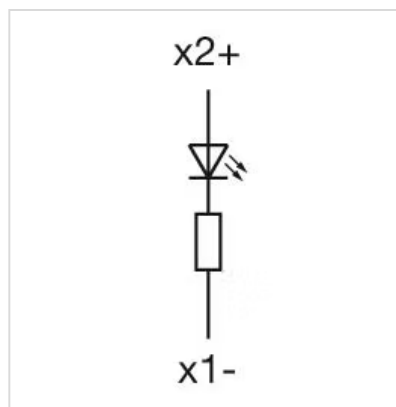
## OTHER

<b>Hints:</b>	Connectors: Brass terminal = anode (+); brass tinned terminal = cathode (-), IP67 front side gap between LED and reflector and gap between reflector and frontplate sealed to IP67 when using the supplied gasket., The plastic is limited resistant to chemicals.
---------------	--

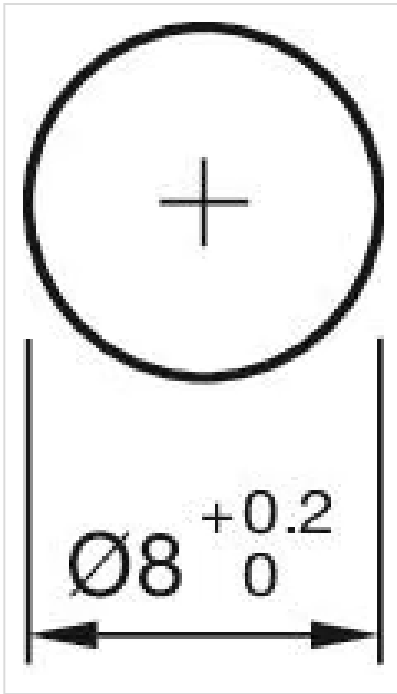
<b>Short Description:</b>	Actuator, Ø 8 mm, Ø 9,5 mm, round, Plug-in terminal, 2.8 x 0.8 mm, Green
---------------------------	--

<b>Kind of illumination:</b>	Single-LED
------------------------------	------------

### Wiring diagrams:



### Mounting cut-outs:



**Dimension drawings:**

