

# Switching element

92-851.342

Distribution by  
DigiKey

**DigiKey**



<https://digikey.eao.com/component/92-851.342/...>

Your product:

---



## 92-851.342 Switching element

*Loading ...*

### ELECTRICAL CHARACTERISTICS

**Switching voltage and switching current:**

Switching voltage	min. 50 m VAC/DC max. 42 VAC/DC
Switching current	min. 10 $\mu$ A AC/DC max. 100 mA AC/DC
Power rating	max. 2 W

**Contacts:**

1 NO

**Forward voltage:**

**Switching rating:**

42 V @ 0,1 A

**Electrical lifetime:**

$\geq$ 500 000 cycles of operation at 42VDC, 50mA, according to IEC 60512-5-9c,  
When attention is paid to the direction of current flow from terminal 3/4 to 1/2 the electrical life can be prolonged.

**Electric strength:**

500 VAC, 50 Hz, 1 minute according to DIN IEC 60512-2-4a

### MECHANICAL CHARACTERISTICS

**Terminal:**

PCB terminal

**Contact material:**

Gold

**Switching action:**

Momentary

**Switching system:**

Short-travel element

**Switching system:**

Short-travel snap-action switching system with two independent contact points and tactile operation  
Guarantees reliable switching even of very light loads.  
1 normally open contact

**Mechanical lifetime:**

$\geq$ 1 Mil. cycles of operation (switching element under overlay),  $\geq$ 5 Mil. cycles of operation (switching element without overlay)

**Operating force:**

2.7 N  $\pm$ 1 N (measured on switching element)

**Operating Travel:**

ca. 0.5 mm

**Weight:**

0.001 kg

## AMBIENT CONDITION

<b>IP Protection:</b>	IP40 switching element (fluxproof to DIN 41640 Part 84), IP65 (front side with overlay foil)
<b>Operating temperature:</b>	- 25 °C ... + 70 °C
<b>Storage temperature:</b>	- 40 °C ... + 85 °C

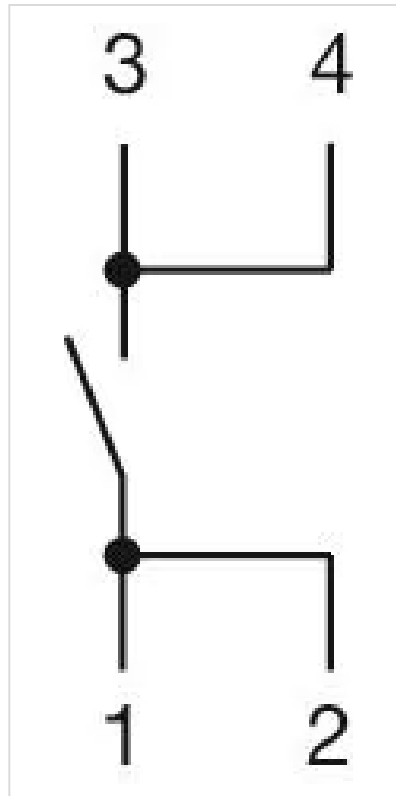
## CERTIFICATE

<b>Conformities:</b>	CE, UKCA, 2011 / 65 / EC (RoHS)
<b>REACH:</b>	REACH compliant
<b>RoHS:</b>	RoHS compliant

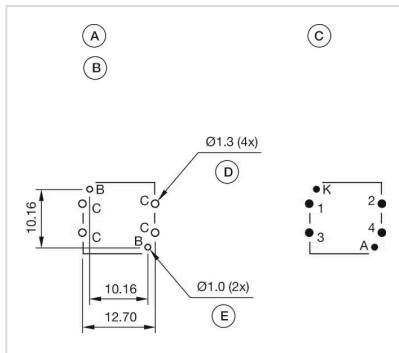
## OTHER

<b>Short Description:</b>	Switching element, Short-travel element, 42 V @ 0,1 A, Gold, 1 NO, PCB terminal
<b>Material:</b>	Plastic
<b>Hints:</b>	The customer has to decide what series resistor shall be used to the LED LED and mounting flange to be ordered separately

## Wiring diagrams:



## Component layouts:



- A = Switching element with illumination
- B = Single LED
- C = Drilling plan (component side)
- D = Hole for switching element, pad max. Ø 2.5 mm
- E = Hole for LED

**Dimension drawings:**

