

# E-stop protective shroud

84-909

Distribution by  
DigiKey

**DigiKey**



<https://digikey.eao.com/p/84-909>

Your product:

---



84-909  
E-stop protective shroud

#### FRONT

**Colour:** Yellow

#### MECHANICAL CHARACTERISTICS

**Weight:** 0.021 kg

#### AMBIENT CONDITION

**IP front protection:** IP40

#### OTHER

**Short Description:** E-stop protective shroud, Ø 45 mm, Metal, Yellow

**Titel Accessory:** E-stop protective shroud

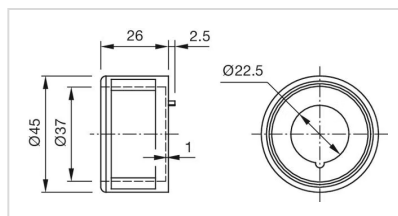
**Dimension:** Ø 45 mm

**Material:** Metal

**Hints:** Front panel thickness 1 ... 3 mm, With anti-twist device, When using a protective shroud the e-stop or stop-switch has to be turned by 180° to be mounted. See dimensional drawing, The protection shroud Part No. 84-909 is not suitable for a proper use of emergency-stop. It can obstruct a spontaneous operation of the emergency-stop switch, This shroud Part No. 84-906 is not compliant to EN ISO 13850. There are no restrictions when combined with stop switches.

**Colour RAL:** 1003 RAL

**Dimension drawings:**



for Part No. 84-909