

Illuminated push button, connector M12, Ø 22 mm, stainless steel 316L, cable 200 mm, 180°

Distribution by  
DigiKey

**DigiKey**

82-665A.2124



<https://digikey.eao.com/component/82-665A.212...>

Your product:

---



82-665A.2124

Illuminated push button, connector M12,  
Ø 22 mm, stainless steel 316L, cable  
200 mm, 180°

*Loading ...*

#### **FRONT**

<b>Front dimension:</b>	Ø 25 mm
<b>Front form:</b>	Round
<b>Front bezel material:</b>	Stainless steel 316L
<b>Front bezel shape:</b>	Flush

#### **MOUNTING**

<b>Mounting cut-out:</b>	Ø 22 mm
<b>Mounting type:</b>	Panel mounting

#### **OPERATING-/INDICATION PART**

<b>Lens colour:</b>	Silver
<b>Lens material:</b>	Stainless steel 316L
<b>Lens illumination:</b>	Illuminated
<b>Lens shape:</b>	Flush
<b>Lens optics:</b>	opaque
<b>Illumination colour:</b>	Blue
<b>Shape of illumination:</b>	Ring (Tritan)

#### **ELECTRICAL CHARACTERISTICS**

**Switching voltage and switching current:**

according to UL 508 (Silver contacts)

$\cos\phi$  0,75 ... 0,8

Voltage	Current
120 VAC	5 A
240 VAC	3 A
24 VAC	1 A

according to IEC 60947-5-1 (Silver contacts)

Service categorie AC-15

Voltage	Current
24 VAC	1 A
35 VAC	1 A (M12 version)
110 VAC	1 A
220 VAC	0.5 A

Switch rating DC service categorie DC-13 (Silver contacts)

Voltage	Current
24 VDC	0.7 A
35 VDC	0.5 A (M12 version)
110 VDC	0.2 A
220 VDC	0.1 A

<b>Operating voltage:</b>	24 V DC (LED)
<b>Rated Operational Voltage <math>U_e</math>:</b>	250 VAC
<b>Rated insulation voltage <math>U_i</math>:</b>	250 V
<b>Switching rating:</b>	35 V AC/DC @ 0,6 A
<b>Electrical lifetime:</b>	50 000 cycles of operation
<b>Electric strength:</b>	1500 VAC, 50 Hz 1 minute between life terminals and ground
<b>Pollution degree:</b>	2, according to EN IEC 60947-1
<b>Thermal current <math>I_{th}</math>:</b>	5 A

## MECHANICAL CHARACTERISTICS

<b>Terminal:</b>	Cable 200 mm, 180°, Connector M12
<b>Switching action:</b>	Maintained
<b>Switching system:</b>	Snap-action switching element
<b>Mechanical lifetime:</b>	500 000 cycles of operation
<b>Operating force:</b>	4 N ... 7 N
<b>Operating Travel:</b>	ca. 3 mm
<b>Tightening torque:</b>	0.5 ... 0.6 Nm
<b>Weight:</b>	0.062 kg

## AMBIENT CONDITION

<b>IP front protection:</b>	IP65, IP67
<b>Operating temperature:</b>	

- 30 °C ... + 70 °C

**Storage temperature:**

- 40 °C ... + 80 °C

**Shock resistance:**

Max. 500 m / s<sup>2</sup> as per IEC 60068-2-27

**Vibration resistance:**

10 ... 500 Hz, amplitude 1.5 mm p-p according to IEC 60068-2-6

**Climate resistance:**

Damp heat, 21 days according to IEC 60512-11

## CERTIFICATE

**Conformities:**

CE, 2011 / 65 / EC (RoHS), 2014 / 35 / EU (LVD)

**REACH:**

REACH compliant

**RoHS:**

RoHS compliant

## OTHER

**Short Description:**

Illuminated push button, connector M12, Ø 22 mm, stainless steel 316L, cable 200 mm, 180°, Maintained, 35 V AC/DC @ 0,6 A, 24 V DC (LED), Cable 200 mm, 180°, Connector M12, Round, Stainless steel 316L, Blue, Silver

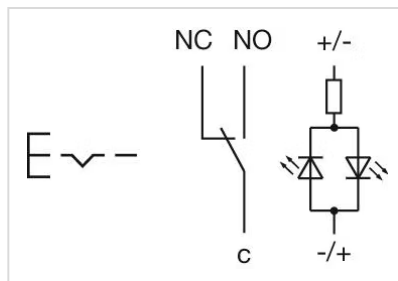
**Kind of illumination:**

Single-LED

**Housing size:**

19 mm

**Wiring diagrams:**

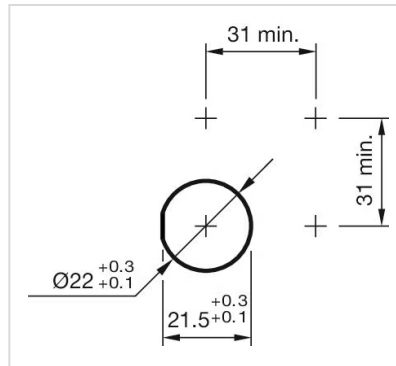


**Component layouts:**



- 1 = NC
- 2 = LED+
- 3 = Common
- 4 = LED-
- 5 = NO
- A-Coded

**Mounting cut-outs:**



**Dimension drawings:**

