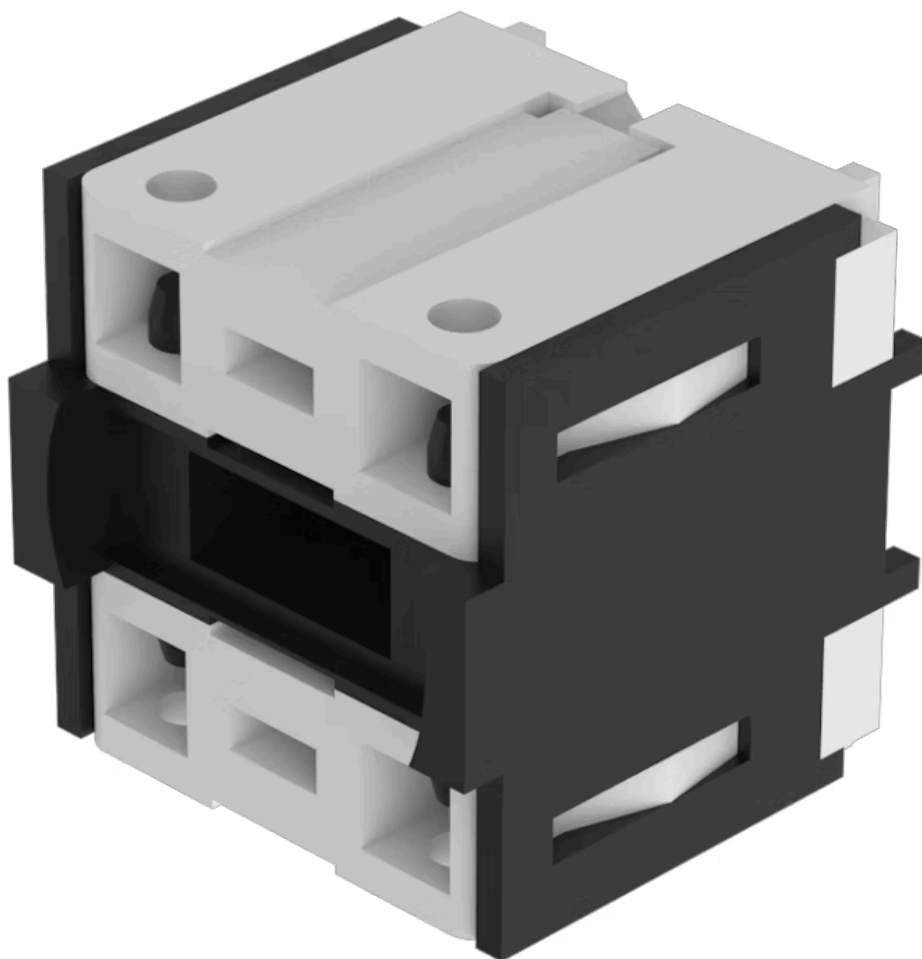


# Lamp element

71-670.006

Distribution by  
DigiKey

**DigiKey**



<https://digikey.eao.com/p/71-670.006>

Your product:

---



## 71-670.006

### Lamp element

#### MECHANICAL CHARACTERISTICS

**Terminal:** PCB terminal

**Weight:** 0.005 kg

#### CERTIFICATE

**REACH:** REACH compliant

**RoHS:** RoHS compliant

#### OTHER

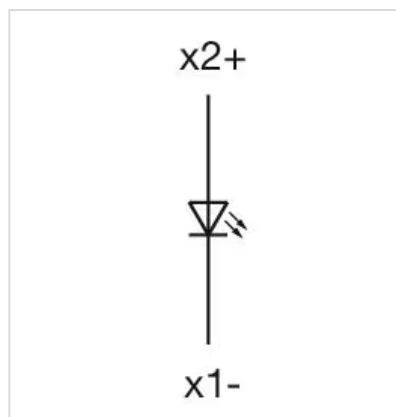
**Short Description:** Lamp element, PCB terminal, Plastic

**Material:** Plastic

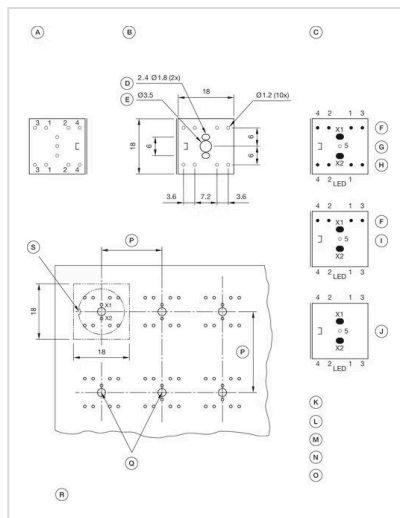
**Housing material:** Plastic

**Hints:** Including locking pin

**Wiring diagrams:**



**Component layouts:**



A = Terminals (rear side)  
 B = Drilling plan (component side)  
 C = non-metallic  
 D = Cu-Pad  
 E = Occupancy plan (component side)  
 F = 1. Switch  
 G = Switching element 2 Normally close +  
 2 Normally open, Part No. 71-672.026  
 H = 2. Switches  
 I = Switching element 1 Normally close +  
 1 Normally open, Part No. 71-671.026  
 J = Illumination element, Part No. 71-  
 670.026  
 K = X1 Lamp cathode (-)  
 L = X2 Lamp anode (+)  
 M = 1-2 Contact normally closed  
 N = 3-4 Contact normally open  
 O = 5 Hole for interlocking pin  
 P = Front dimension min.  
 Q = Position interlocking pin  
 R = Note:  
 Pitch of the print circuit board hole Ø3.5

must agree with the mounting holes on the front plate  
 S = Slot in actuator