

# Actuator

71-612.0

Distribution by  
DigiKey

**DigiKey**



<https://digikey.eao.com/p/71-612.0>

Your product:



# 71-612.0

## Actuator

**MOUNTING**

**Mounting type:** Panel mounting

**OPERATING-/INDICATION PART**

**Lens illumination:** Illuminated

**ELECTRICAL CHARACTERISTICS**

<b>Switching voltage and switching current:</b>	Switch rating AC cosφ 0,7 ... 0,8 gemäß EN IEC 60947-5-1		
	Voltage	250 VAC	
	Current	3 A	
	Switch rating DC gemäß EN IEC 60947-5-1		
	Voltage	24 VDC	250 VDC
	Current	3 A	0.5 A
<b>Surge voltage resistance:</b>	2500 VAC, 50 Hz, 1 minute, as per DIN / IEC 60512-2 between all terminals and earth		
<b>Recommended minimum operational data:</b>	Voltage	5 VAC/DC	
	Current	10 mA	

**MECHANICAL CHARACTERISTICS**

<b>Switching action:</b>	Maintained
<b>Switching system:</b>	Self-cleaning, double-break snap action switching system, 1 normally closed and 1 normally open contact per element.
<b>Mechanical lifetime:</b>	1 Mil. cycles of operation
<b>Operating force:</b>	3 N ... 7 N
<b>Operating Travel:</b>	ca. 3 mm
<b>Tightening torque:</b>	Fixing nut max. 0.5 Nm
<b>Weight:</b>	0.005 kg

## AMBIENT CONDITION

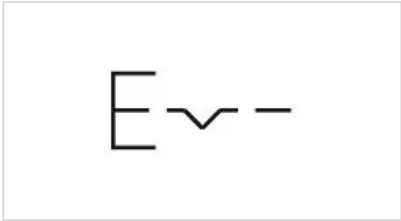
<b>IP Protection:</b>	IP65 front side
<b>Operating temperature:</b>	– 25 °C ... + 55 °C
<b>Storage temperature:</b>	– 40 °C ... + 85 °C
<b>Shock resistance:</b>	Max. 500 m/s <sup>2</sup> , pulse width, 3-axis (sinusoidal EN IEC 60068-2-27)
<b>Vibration resistance:</b>	Max. 100 m / s <sup>2</sup> from 10 Hz ... 500 Hz, (sinusoidal EN IEC 60068-2-6)
<b>Climate resistance:</b>	Damp heat, steady: 56 days, + 40 °C/93 % relative humidity, according to EN IEC 60068-2-78

## CERTIFICATE

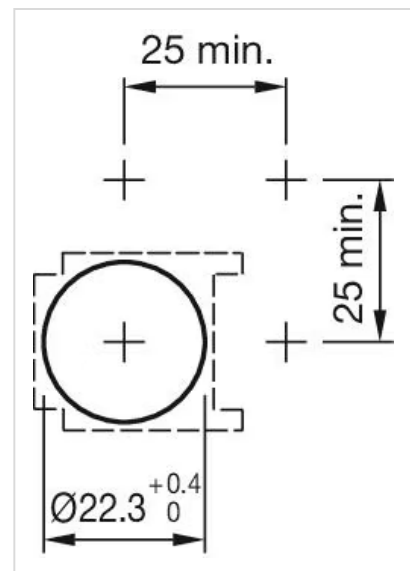
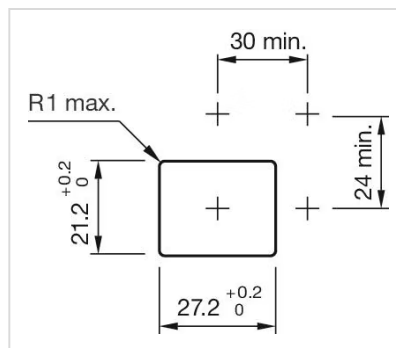
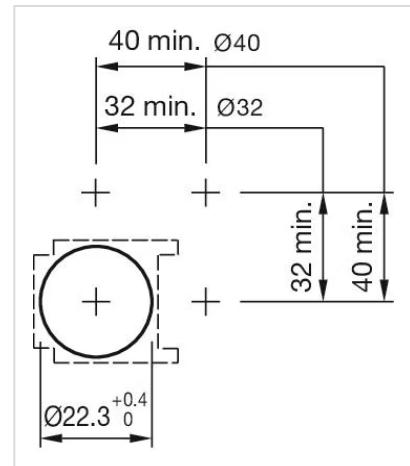
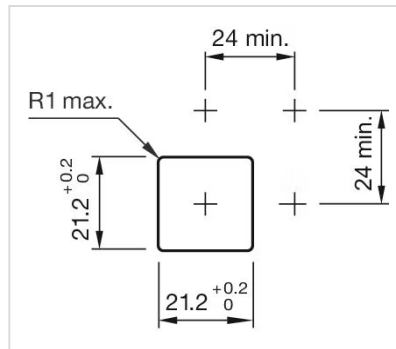
<b>Conformities:</b>	CE, UKCA, 2011 / 65 / EC (RoHS), 2014 / 35 / EU (LVD)
<b>REACH:</b>	REACH compliant
<b>RoHS:</b>	RoHS compliant

## OTHER

<b>Short Description:</b>	Actuator, Illuminated, Maintained
<b>Housing colour:</b>	Black
<b>Housing material:</b>	Plastic, according to UL 94 V0
<b>Product attributes:</b>	Pitch of the front plate mounting holes must agree with the printed circuit board holes Ø 3.5 mm
<b>Hints:</b>	Pitch of the front plate mounting holes must agree with the printed circuit board holes Ø 3.5 mm
<b>Wiring diagrams:</b>	



**Mounting cut-outs:**



**Dimension drawings:**

