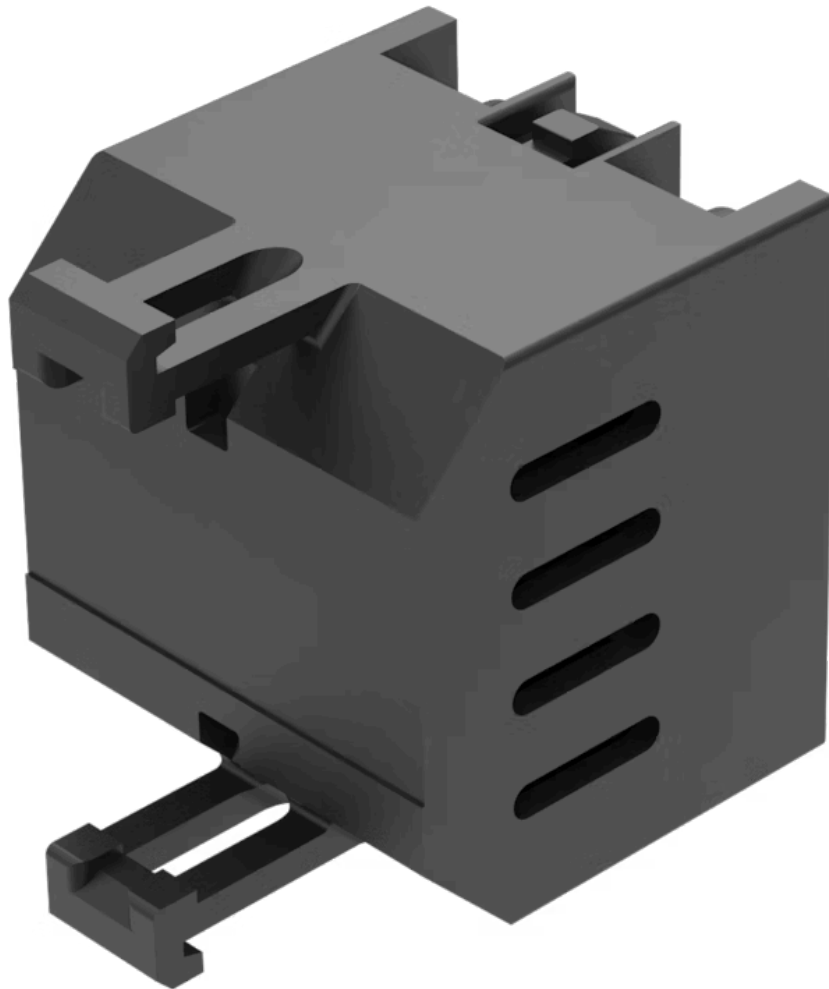


# Resistor-diode element

704.941.9

Distribution by  
DigiKey

**DigiKey**



<https://digikey.eao.com/p/704.941.9>

Your product:

---



## 704.941.9

### Resistor-diode element

#### ELECTRICAL CHARACTERISTICS

**Operating voltage:** 130 - 230 V AC

#### MECHANICAL CHARACTERISTICS

**Terminal:** Screw terminal

**Weight:** 0.017 kg

#### OTHER

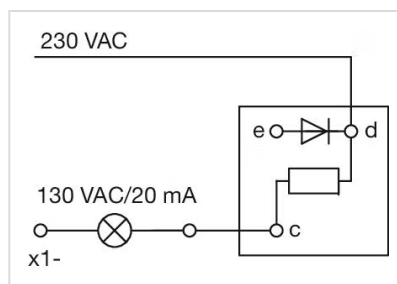
**Short Description:** Resistor-diode element, Plastic, Screw terminal, 130 - 230 V AC

**Titel Accessory:** Resistor-diode element

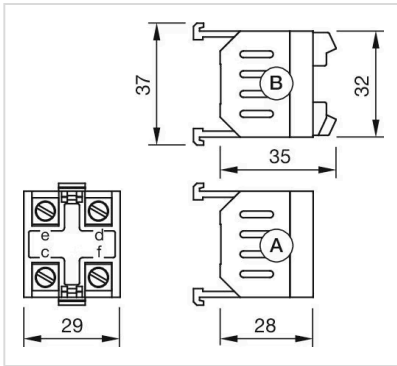
**Material:** Plastic

**Product attributes:** Lamp voltage/-current 130 V, 20 mA

**Wiring diagrams:**



**Dimension drawings:**



A = Screw terminal  
Push-in terminal (PIT)