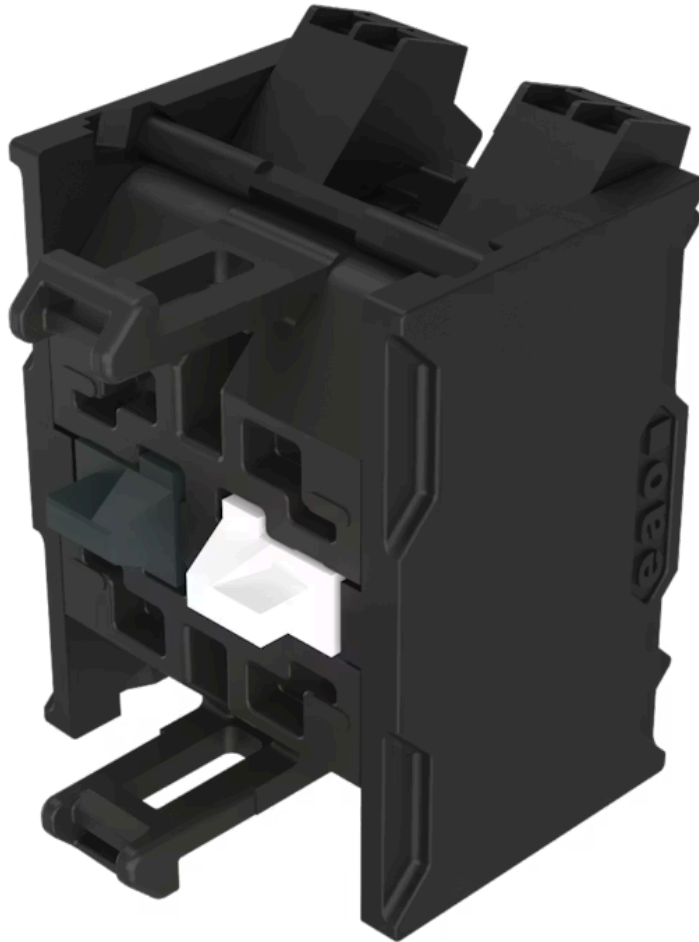


Switching element - New Version

Distribution by
DigiKey

DigiKey

704.917.4FS-1



<https://digikey.eao.com/component/704.917.4FS...>

Your product:



704.917.4FS-1

Switching element - New Version

ELECTRICAL CHARACTERISTICS

Switching voltage and switching current:

as per DIN EN IEC 60947-5-1		
voltage	DC13	AC15
24 V	4.0 A	8.0 A
60 V	1.5 A	8.0 A
110 V	1.0 A	
120 V		8.0 A
230 V	0.4 A	7.0 A
400 V	0.2 A	5.0 A
500 V	0.15 A	4.0 A
as per UL 60947-5-1		
voltage	power	
24 VDC	4.0 A, Pilot duty	
60 VDC	1.5 A, Pilot duty	
120 VDC	1.0 A, Pilot duty	
240 VDC	0.4 A, Pilot duty	
415 VDC	0.2 A, Pilot duty	
480 VDC	0.14A, Pilot duty	
120 VAC	8.0 A, Pilot duty	
240 VAC	7.0 A, Pilot duty	
415 VAC	5.0 A, Pilot duty	
480 VAC	4.0 A, Pilot duty	

Contacts: 1 NC / 1 FS

Rated impulse withstand voltage Uimp: 4 kV

Rated insulation voltage Ui: 500 V

Recommended minimum operational data:	Gold-silver contacts	
	Voltage	24 VDC
	Current	5 mA
	Hard silver contacts	
	Voltage	24 VDC
	Current	50 mA

Switching rating: 500 V @ 10 A

Electrical lifetime: 50 000 cycles of operation (500 VAC, 10 A)

Pollution degree: 3

Standards: The switches comply with the “Standards for low-voltage switching devices” DIN EN IEC UL 60947-5-1

Thermal current Ith: Max. current as per EN IEC 60947-5-1 10 A

MECHANICAL CHARACTERISTICS

Terminal:	Push-in terminal
Contact material:	Gold
Switching system:	Slow-make switching element
Switching system:	The double-break, slow-make switching element is equipped with one or two independent contact systems, acting as normally open or normally closed contact. The normally closed contact has forced opening. Slow-make contacts with forced action are ideal for high switch ratings.
Operating force:	1 Normally closed approx. 2 N, 1 Normally open approx. 3 N
Wire cross section:	Max. wire cross-section 2 wires with 1 mm Skinning wire 8 mm Max. wire cross-section of stranded cable 2 x 0.75 mm ² use stranded wires only with wire end ferrules of 8 mm length Only one polarity is allowed on each side when wiring.
Weight:	0.027 kg

AMBIENT CONDITION

IP Protection:	IP20
Operating temperature:	– 40 °C ... + 55 °C
Storage temperature:	– 40 °C ... + 85 °C
Shock resistance:	(single impacts, semi-sinusoidal) 300 m/s ² , pulse width 18 ms, as per DIN EN 60068-2-27
Vibration resistance:	(sinusförmig) 100 m/s ² bei 10 Hz...500 Hz, nach DIN EN 60068-2-6, Erhöhtes Breitbandrauschen nach DIN EN 61373, Klasse 1B
Climate resistance:	Relative humidity 10 %rh ... 95 %rh (non-condensing) original packaging according to DIN EN IEC 60721-3-1 Class 1C1

CERTIFICATE

Approbations:	CB (IEC 60947-5-1), cULus, DNV, VDE
Conformities:	CE, CCC, UKCA
REACH:	REACH compliant
RoHS:	RoHS compliant

OTHER

Short Description:	Switching element - New Version, Slow-make switching element, 500 V @ 10 A, Gold, 1 NC / 1 FS, Push-in terminal
Hints:	When using the switching element, the application guidelines must be observed. For the third switching element the terminal marking insert is to be ordered separately

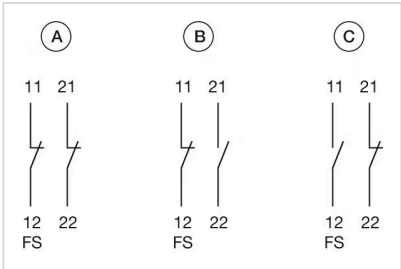
Operating temperature: Other temperatures on request
A suitable enclosure is required for applications with increased protection requirements. In North America, the product must be installed in an enclosure in accordance with UL 50E Type 2 or higher.

Special requirements:

Special requirements for positive-opening auxiliary current switches
Positive opening travel
Minimum force
Max. travel

Emergency
Emergency
which i
Emergency

Wiring diagrams:



A = mounted, not actuated
B = mounted, actuated
C = not mounted, not actuated

Dimension drawings:

