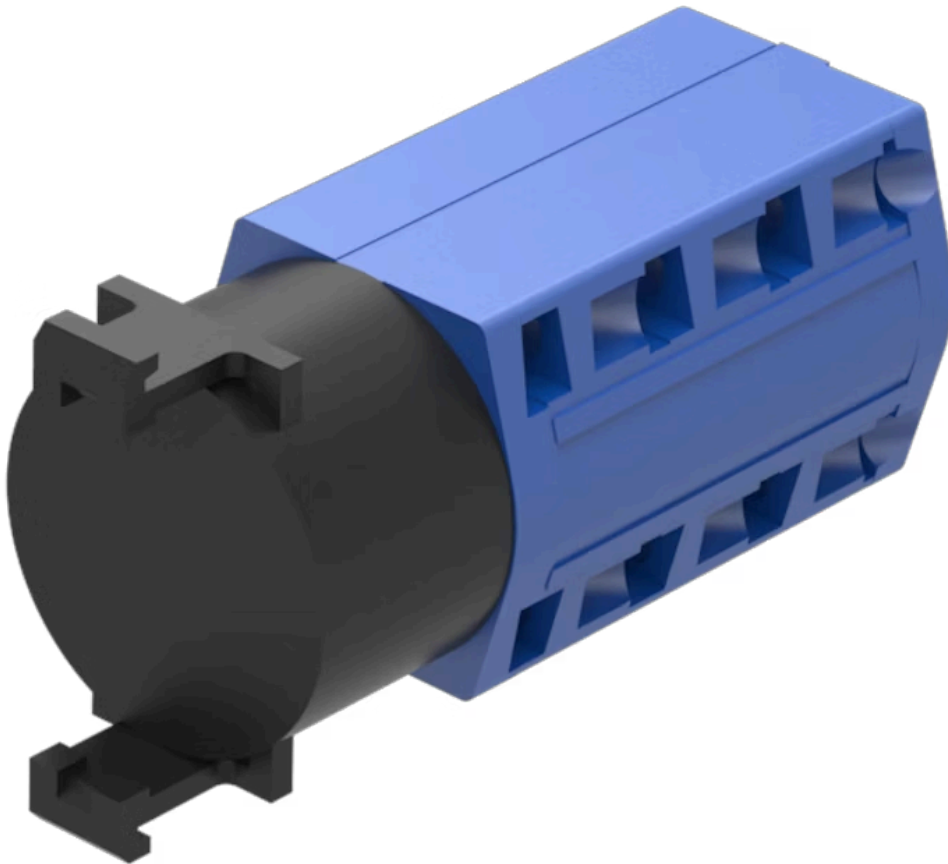


# Rotary switching element

704.8A239

Distribution by  
DigiKey

**DigiKey**



<https://digikey.eao.com/p/704.8A239>

Your product:

---



## 704.8A239

### Rotary switching element

#### ELECTRICAL CHARACTERISTICS

<b>Operating voltage:</b>	20
<b>Rated impulse withstand voltage Uimp:</b>	4 kV
<b>Switching rating:</b>	440 V AC @ 10 A

#### MECHANICAL CHARACTERISTICS

<b>Terminal:</b>	Screw terminal
<b>Contact material:</b>	Gold
<b>Switching system:</b>	Slow-make switching element
<b>Switching positions:</b>	12 positions
<b>Tightening torque:</b>	Fixing nut max. 0.25 Nm
<b>Wire cross section:</b>	Single-core or stranded wire 2 x 1.5 mm <sup>2</sup> (2 x AWG 14) Flexible wire 2 x 1.5 mm <sup>2</sup> (2 x AWG 16)
<b>Weight:</b>	0.082 kg

#### AMBIENT CONDITION

<b>Operating temperature:</b>	Ambient Temperatures of Stages, open at 100 % I <sub>u</sub> / I <sub>th</sub> : 55 °C during 24 h with peaks up to 60 °C, enclosed at 100 % I <sub>the</sub> : 35 °C during 24 h with peaks up to 40 °C
-------------------------------	--

#### CERTIFICATE

<b>REACH:</b>	REACH compliant
<b>RoHS:</b>	RoHS compliant

#### OTHER

**Short Description:**

Rotary switching element, Slow-make switching element, 440 V AC @ 10 A, Gold, Screw terminal

**Wiring diagrams:**