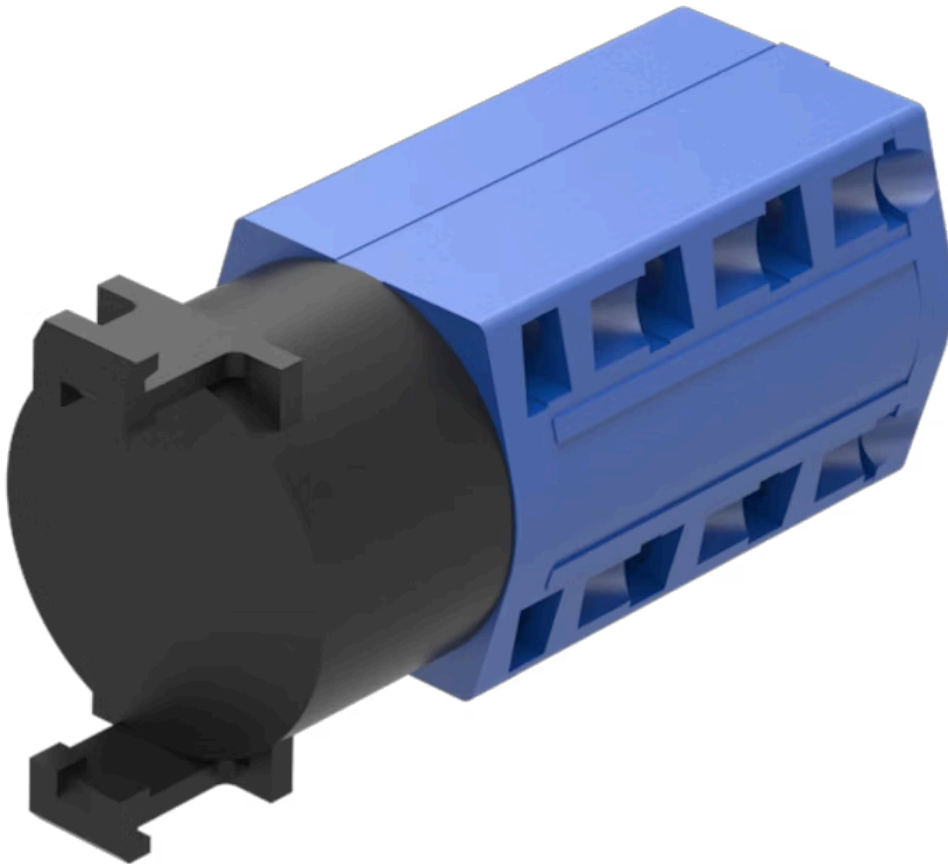


Rotary switching element

704.8A238

Distribution by
DigiKey

DigiKey



<https://digikey.eao.com/p/704.8A238>

Your product:



704.8A238

Rotary switching element

ELECTRICAL CHARACTERISTICS

Operating voltage:	20
Rated impulse withstand voltage Uimp:	4 kV
Switching rating:	440 V AC @ 10 A

MECHANICAL CHARACTERISTICS

Terminal:	Screw terminal
Contact material:	Gold
Switching system:	Slow-make switching element
Switching positions:	11 positions
Tightening torque:	Fixing nut max. 0.25 Nm
Wire cross section:	Single-core or stranded wire 2 x 1.5 mm ² (2 x AWG 14) Flexible wire 2 x 1.5 mm ² (2 x AWG 16)
Weight:	0.082 kg

AMBIENT CONDITION

Operating temperature:	Ambient Temperatures of Stages, open at 100 % I _u / I _{th} : 55 °C during 24 h with peaks up to 60 °C, enclosed at 100 % I _{th} : 35 °C during 24 h with peaks up to 40 °C
-------------------------------	---

CERTIFICATE

REACH:	REACH compliant
RoHS:	RoHS compliant

OTHER

Short Description:

Rotary switching element, Slow-make switching element, 440 V AC @ 10 A, Gold, Screw terminal

Wiring diagrams: