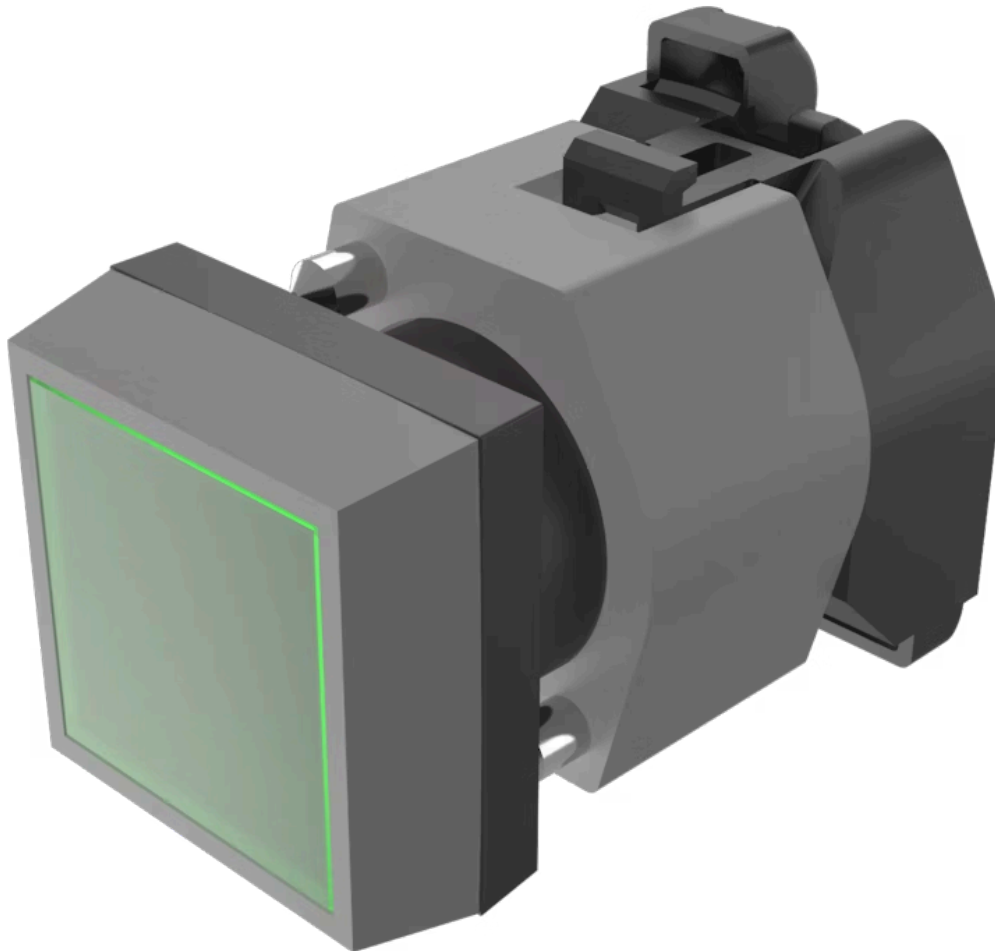


Actuator

704.260.5

Distribution by
DigiKey

DigiKey



<https://digikey.eao.com/p/704.260.5>

Your product:



704.260.5 Actuator

FRONT

Front dimension:	30 mm x 30 mm
Front form:	Square
Front bezel colour:	Grey
Front bezel material:	Plastic

MOUNTING

Design:	Raised
Mounting type:	Panel mounting

OPERATING-/INDICATION PART

Lens colour:	Green
Lens material:	Plastic
Lens illumination:	Illuminated
Lens shape:	Flush
Lens optics:	transparent

ELECTRICAL CHARACTERISTICS

Standards:	The switches comply with the "Standards for low-voltage switching devices" DIN EN 60947-1
------------	---

MECHANICAL CHARACTERISTICS

Terminal:	Screw terminal
Switching action:	Maintained

Mechanical lifetime:	≤3 Mil. cycles of operation
Operating force:	8 N
Operating Travel:	ca. 5.8 mm ± 0.2 mm
Weight:	0.056 kg

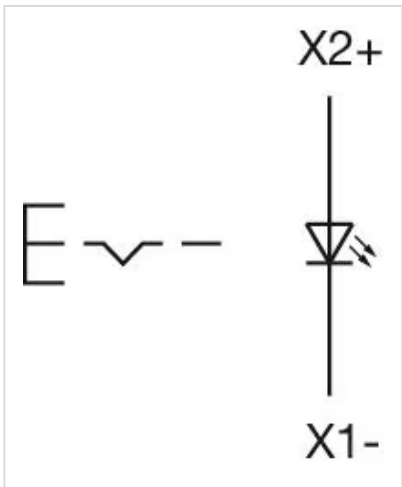
AMBIENT CONDITION

IP Protection:	IP65 front side
Operating temperature:	– 40 °C ... + 55 °C
Storage temperature:	– 40 °C ... + 85 °C

CERTIFICATE

REACH:	REACH compliant
RoHS:	RoHS compliant

OTHER

Short Description:	Actuator, 30 mm x 30 mm, Flush, Illuminated, Green, Plastic, transparent, Square, Grey, Plastic, Maintained, Screw terminal
Housing colour:	Black
Housing material:	Plastic
Hints:	Frontring with protective cover to be mounted with a torque of 0.4 Nm onto actuator, Max. 3 switching elements can be clipped on
max. number of switching elements:	3
Wiring diagrams:	 <p>The diagram shows a switch symbol (a rectangle with a diagonal line) connected to a terminal block. The terminal block has two terminals labeled X2+ and X1-. The switch is connected to X2+ and X1-.</p>
Mounting cut-outs:	



A = Screw terminal
 B = Push-in terminal (PIT)
 C = Plug-in terminal 6.3 mm x 0.8 mm
 D = Double plug-in terminal 6.3 mm x 0.8 mm

Dimension drawings:



A = Screw terminal