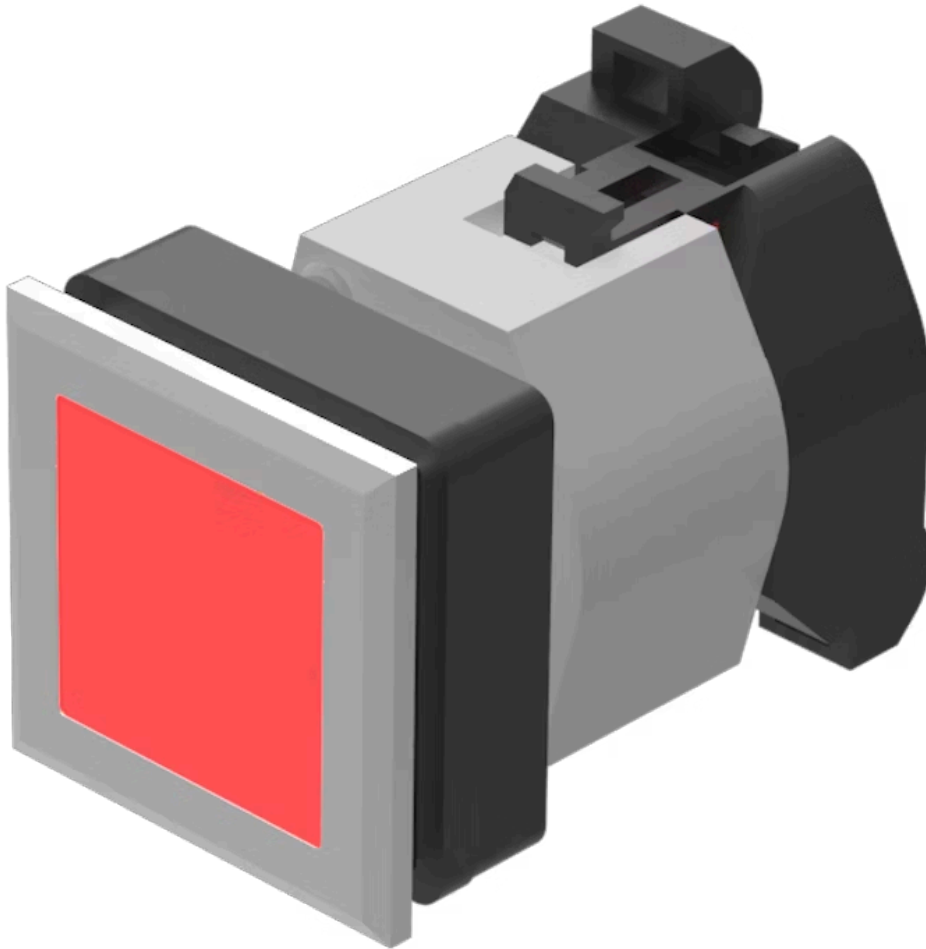


Actuator

704.202.208

Distribution by
DigiKey

DigiKey



<https://digikey.eao.com/p/704.202.208>

Your product:



704.202.208 Actuator

FRONT

Front form:	square
Front bezel material:	Plastic
Front dimension:	35 mm x 35 mm
Front bezel colour:	Silver

MOUNTING

Design:	flush
Mounting cut-out:	30 mm x 30 mm

OPERATING-/INDICATION PART

Lens material:	Plastic
Lens optics:	transparent
Marking plate illumination:	illuminative
Marking plate optics:	translucent
Lens shape:	flush
Marking plate colour:	White
Lens colour:	Red

ELECTRICAL CHARACTERISTICS

Standards:	The switches comply with the "Standards for low-voltage switching devices" DIN EN 60947-1
-------------------	---

MECHANICAL CHARACTERISTIC

Terminal: Screw terminal

Weight: 0.061 kg

AMBIENT CONDITION

Storage temperature: - 40 °C ... + 85 °C

IP Protection: IP65 front side

Operating temperature: - 40 °C ... + 55 °C

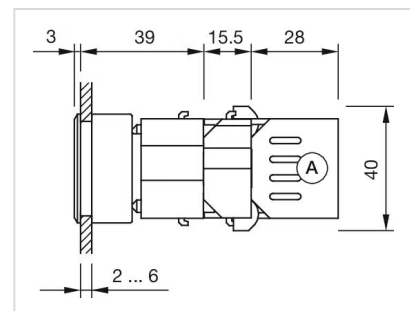
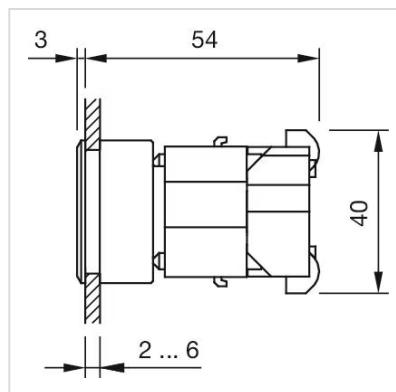
OTHER

Housing colour: Black

Housing material: Plastic

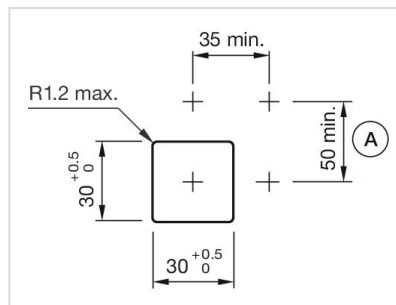
Short Description: Actuator, 30 mm x 30 mm, 35 mm x 35 mm, flush, Red, Plastic, transparent, square, Silver, Plastic, Screw terminal

Dimension drawings:



A = Screw terminal

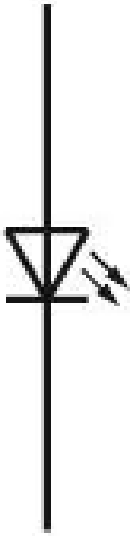
Mounting cut-outs:



A = Screw terminal

Wiring diagrams:

x_2+



x_1-