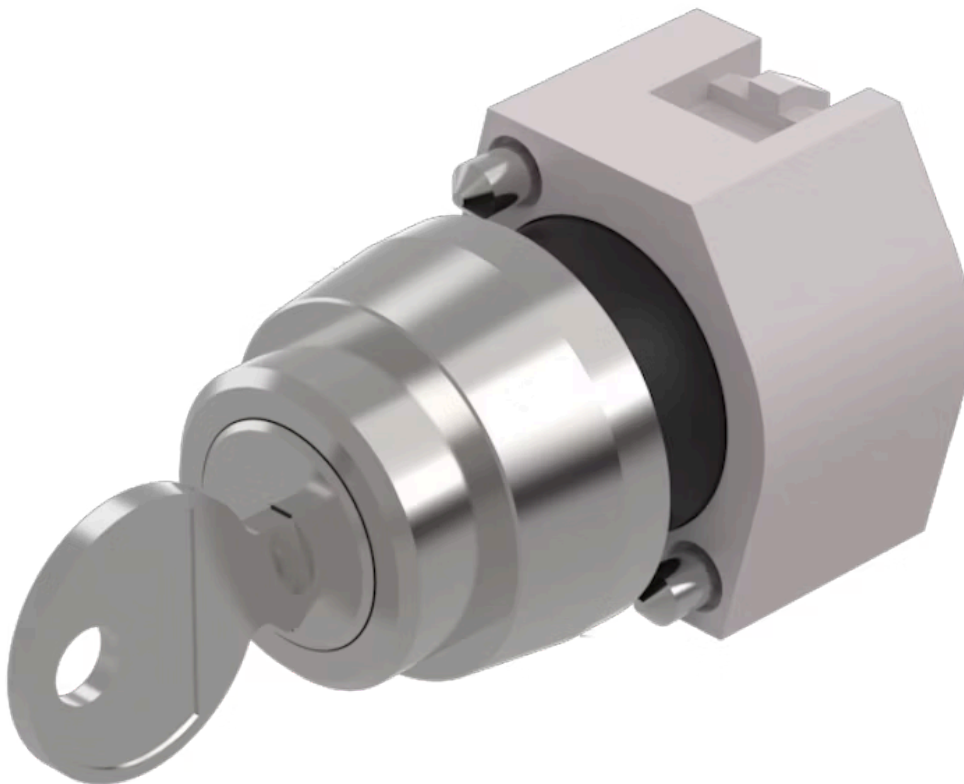


Actuator

704.120.0

Distribution by
DigiKey

DigiKey



<https://digikey.eao.com/p/704.120.0>

Your product:



704.120.0 Actuator

FRONT

| | |
|-----------------------|-----------|
| Front dimension: | Ø 29 mm |
| Front form: | Round |
| Front bezel colour: | Nature |
| Front bezel material: | Aluminium |

MOUNTING

| | |
|----------------|----------------|
| Design: | Raised |
| Mounting type: | Panel mounting |

ELECTRICAL CHARACTERISTICS

| | |
|------------|---|
| Standards: | The switches comply with the "Standards for low-voltage switching devices" DIN EN 60947-1 |
|------------|---|

MECHANICAL CHARACTERISTICS

| | |
|----------------------|-----------------------------|
| Switching action: | Rest - Maintained (a) |
| Switching positions: | 2 positions |
| Switching angle: | 90° right / -45° ... +45° |
| Mechanical lifetime: | ≤50 000 cycles of operation |
| Weight: | 0.07 kg |

AMBIENT CONDITION

| | |
|------------------------|---------------------|
| IP Protection: | IP65 front side |
| Operating temperature: | - 40 °C ... + 55 °C |

Storage temperature: – 40 °C ... + 85 °C

CERTIFICATE

REACH: REACH compliant

RoHS: RoHS compliant

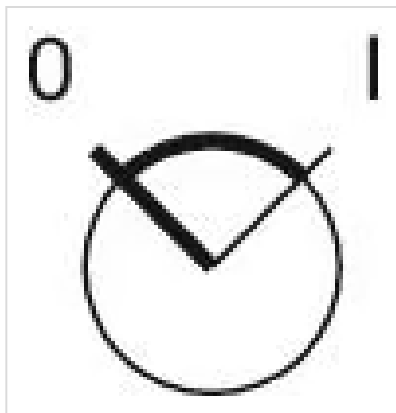
OTHER

Short Description: Actuator, Ø 29 mm, Round, Nature, Aluminium, Rest - Maintained (a)

Hints: The standard lock Ronis 251
Further lock numbers on request
Max. 3 switching elements can be clipped on

max. number of switching elements: 3

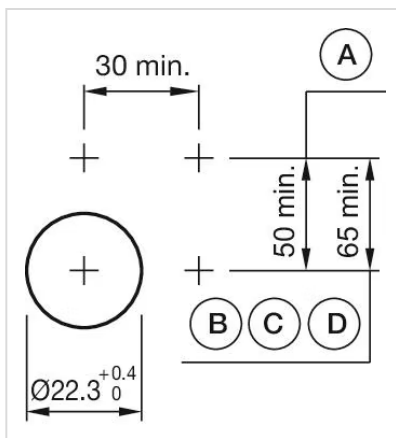
Switching positions:



Wiring diagrams:

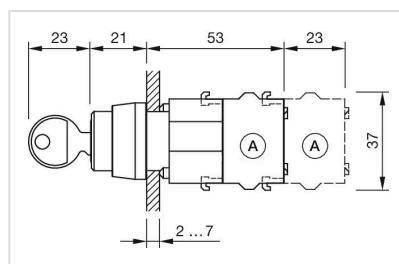


Mounting cut-outs:



A = Screw terminal
B = Push-in terminal (PIT)
C = Plug-in terminal 6.3 mm x 0.8 mm
D = Double plug-in terminal 6.3 mm x 0.8 mm

Dimension drawings:



A = Screw terminal