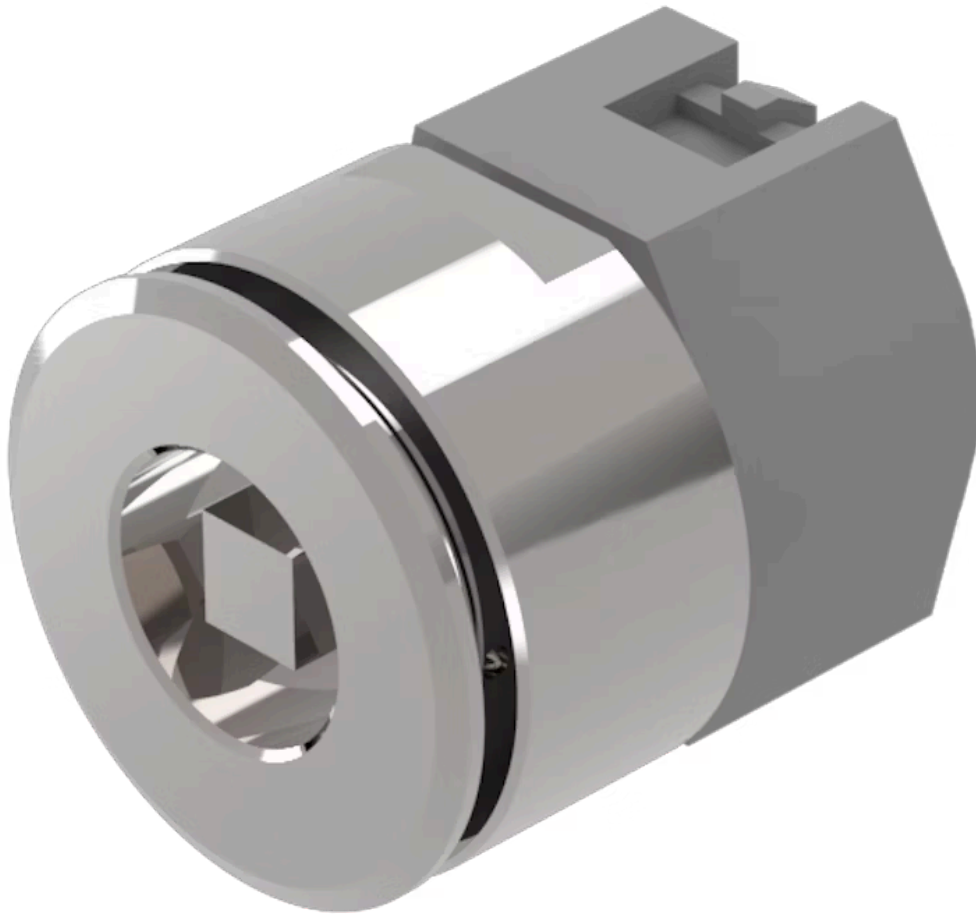


# Actuator

704.093.0x28

Distribution by  
DigiKey

**DigiKey**



<https://digikey.eao.com/p/704.093.0x28>

Your product:

---



## 704.093.0x28 Actuator

### FRONT

Front dimension:	Ø 38 mm
Front form:	Round
Front bezel colour:	Nature
Front bezel material:	Stainless steel

### MOUNTING

Design:	Flush
Mounting cut-out:	Ø 30.5 mm
Mounting type:	Panel mounting

### ELECTRICAL CHARACTERISTICS

Standards:	The switches comply with the "Standards for low-voltage switching devices" DIN EN 60947-1
------------	---

### MECHANICAL CHARACTERISTICS

Switching action:	Maintained - Rest - Maintained
Switching positions:	3 positions
Switching angle:	45° left / 45° right
Mechanical lifetime:	≤250 000 cycles of operation
Weight:	0.13 kg

### AMBIENT CONDITION

IP Protection:	IP67 front side
----------------	-----------------

**Operating temperature:** - 40 °C ... + 55 °C

**Storage temperature:** - 40 °C ... + 85 °C

## CERTIFICATE

**REACH:** REACH compliant

**RoHS:** RoHS compliant

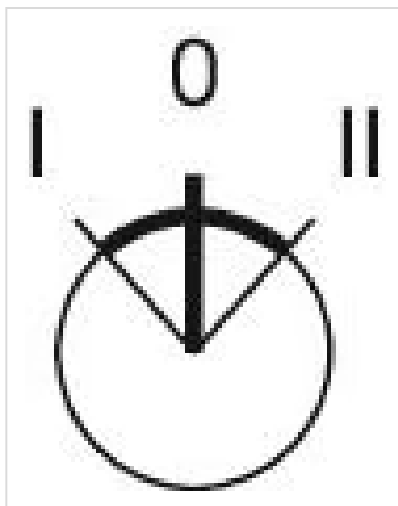
## OTHER

**Short Description:** Actuator, Ø 30.5 mm, Ø 38 mm, Round, Nature, Stainless steel, Maintained - Rest - Maintained

**Hints:** In the Part-No. "x" stands for not defined actuator, Max. 1 switching element can be clipped on

**max. number of switching elements:** 3

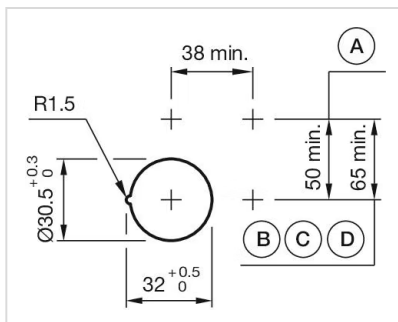
**Switching positions:**



**Wiring diagrams:**

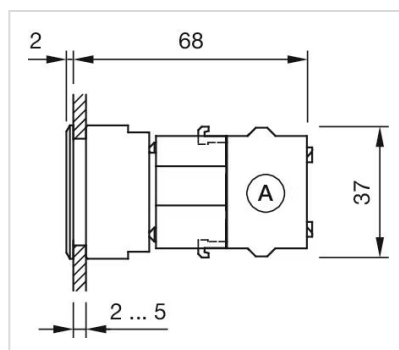


**Mounting cut-outs:**



A = Screw terminal  
B = Push-in terminal (PIT)  
C = Plug-in terminal 6.3 mm x 0.8 mm  
D = Double plug-in terminal 6.3 mm x 0.8 mm

**Dimension drawings:**



A = Screw terminal