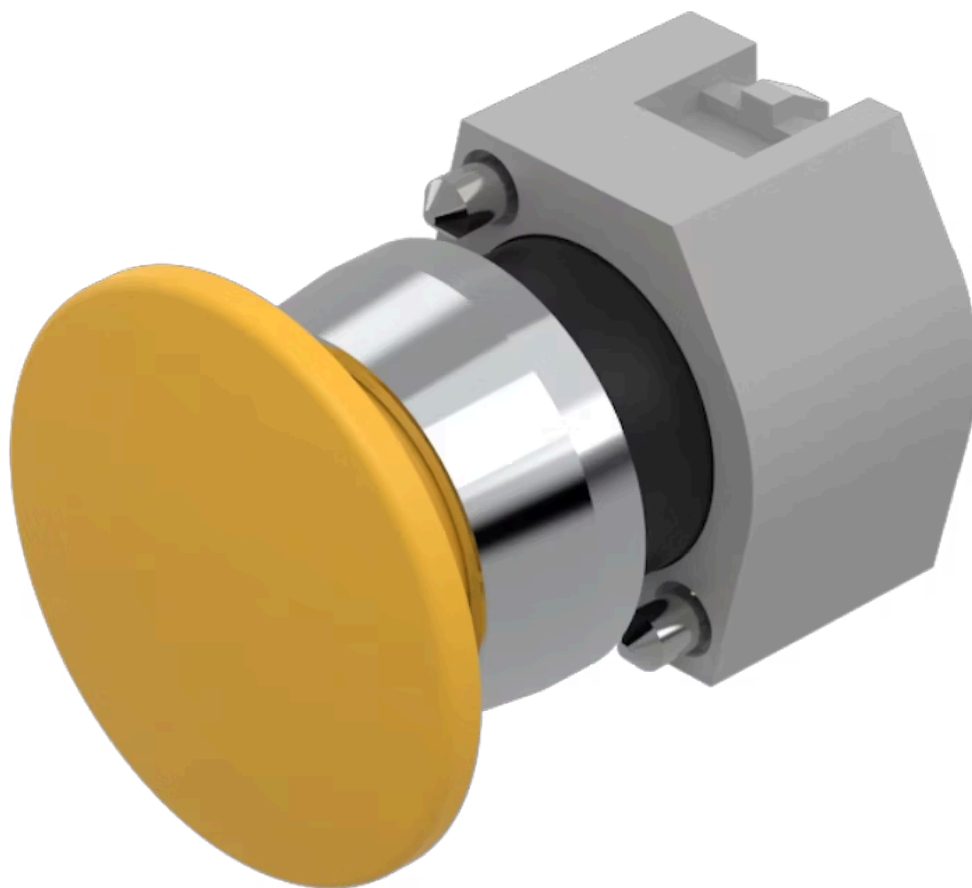


Actuator

704.071.4

Distribution by
DigiKey**DigiKey**<https://digikey.eao.com/p/704.071.4>

Your product:



704.071.4 Actuator

FRONT

| | |
|-----------------------|----------------------|
| Front dimension: | Ø 40 mm |
| Front form: | Round |
| Front bezel colour: | Nature |
| Front bezel material: | Aluminium |
| Front bezel shape: | With protective hood |

MOUNTING

| | |
|----------------|----------------|
| Design: | Raised |
| Mounting type: | Panel mounting |

OPERATING-/INDICATION PART

| | |
|--------------------|-----------------|
| Lens colour: | Yellow |
| Lens material: | Plastic |
| Lens illumination: | Non illuminated |
| Lens shape: | Mushroom-head |
| Lens optics: | opaque |

MECHANICAL CHARACTERISTICS

| | |
|----------------------|-----------------------------|
| Switching action: | Momentary |
| Mechanical lifetime: | ≤3 Mil. cycles of operation |
| Weight: | 0.044 kg |

CERTIFICATE

REACH: REACH compliant

RoHS: RoHS compliant

OTHER

Short Description:

Actuator, Ø 40 mm, Mushroom-head, Non illuminated, Yellow, Plastic, opaque, Round, With protective hood, Nature, Aluminium, anodised, Momentary

Housing colour:

Grey

Housing material:

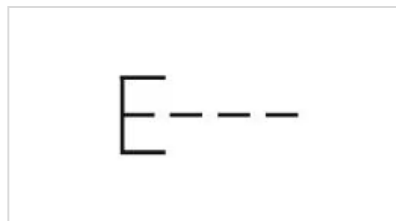
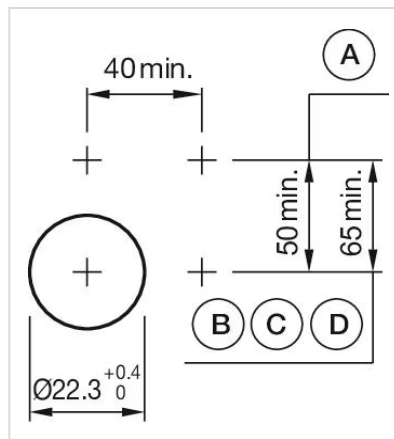
Plastic

Hints:

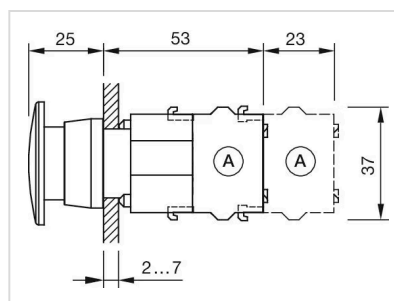
Max. 3 switching elements can be clipped on

max. number of switching elements:

3

Wiring diagrams:**Mounting cut-outs:**

A = Screw terminal
B = Push-in terminal (PIT)
C = Plug-in terminal 6.3 mm x 0.8 mm
D = Double plug-in terminal 6.3 mm x 0.8 mm

Dimension drawings:

A = Screw terminal