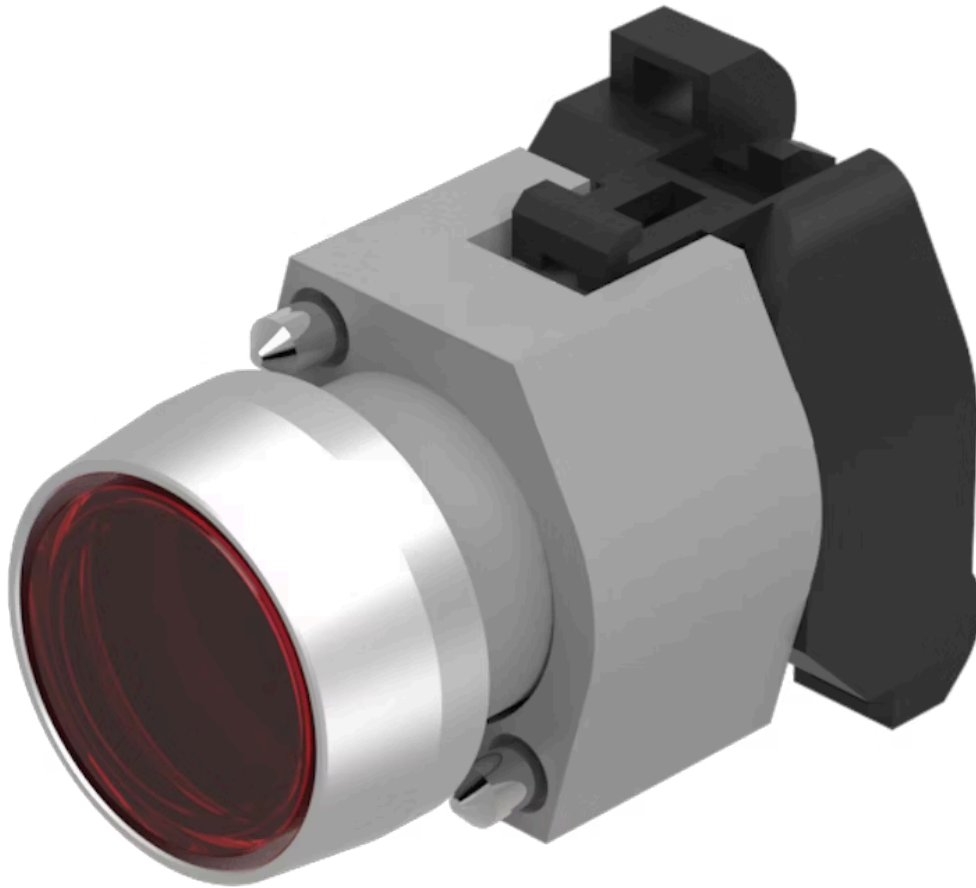


# Actuator

704.032.2

Distribution by  
DigiKey

**DigiKey**



<https://digikey.eao.com/p/704.032.2>

Your product:

---



## 704.032.2 Actuator

### FRONT

|                       |           |
|-----------------------|-----------|
| Front dimension:      | Ø 29 mm   |
| Front form:           | Round     |
| Front bezel colour:   | Nature    |
| Front bezel material: | Aluminium |

### MOUNTING

|                |                |
|----------------|----------------|
| Design:        | Raised         |
| Mounting type: | Panel mounting |

### OPERATING-/INDICATION PART

|                    |             |
|--------------------|-------------|
| Lens colour:       | Red         |
| Lens material:     | Plastic     |
| Lens illumination: | Illuminated |
| Lens shape:        | Flush       |
| Lens optics:       | transparent |

### ELECTRICAL CHARACTERISTICS

|            |   |
|------------|---|
| Standards: | The switches comply with the "Standards for low-voltage switching devices" DIN EN 60947-1 |
|------------|---|

### MECHANICAL CHARACTERISTICS

|                   |                |
|-------------------|----------------|
| Terminal:         | Screw terminal |
| Switching action: | Momentary      |

|                             |                             |
|-----------------------------|-----------------------------|
| <b>Mechanical lifetime:</b> | ≤3 Mil. cycles of operation |
| <b>Operating force:</b>     | 8 N                         |
| <b>Operating Travel:</b>    | ca. 5.8 mm ± 0.2 mm         |
| <b>Weight:</b>              | 0.056 kg                    |

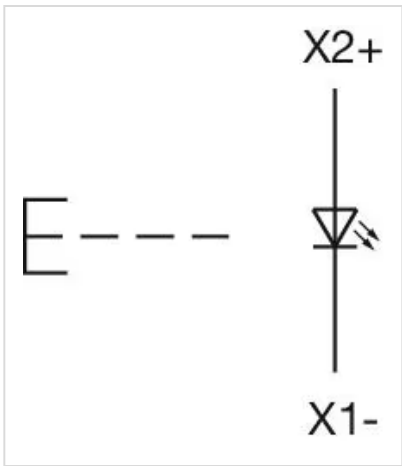
## AMBIENT CONDITION

|                               |                     |
|-------------------------------|---------------------|
| <b>IP Protection:</b>         | IP65 front side     |
| <b>Operating temperature:</b> | – 40 °C ... + 55 °C |
| <b>Storage temperature:</b>   | – 40 °C ... + 85 °C |

## CERTIFICATE

|               |                 |
|---------------|-----------------|
| <b>REACH:</b> | REACH compliant |
| <b>RoHS:</b>  | RoHS compliant  |

## OTHER

|   |   |
|---|---|
| <b>Short Description:</b>                 | Actuator, Ø 29 mm, Flush, Illuminated, Red, Plastic, transparent, Round, Nature, Aluminium, anodised, Momentary, Screw terminal |
| <b>Housing colour:</b>                    | Grey  |
| <b>Housing material:</b>                  | Plastic   |
| <b>Hints:</b>                             | Frontring with protective cover to be mounted with a torque of 0.4 Nm onto actuator,Max. 3 switching elements can be clipped on |
| <b>max. number of switching elements:</b> | 3   |
| <b>Wiring diagrams:</b>                   |   |

**Mounting cut-outs:**



A = Screw terminal  
 B = Push-in terminal (PIT)  
 C = Plug-in terminal 6.3 mm x 0.8 mm  
 D = Double plug-in terminal 6.3 mm x 0.8 mm

#### Dimension drawings:



A = Screw terminal