

# Actuator

704.006.518

Distribution by  
DigiKey

**DigiKey**



<https://digikey.eao.com/p/704.006.518>

Your product:

---



## 704.006.518 Actuator

### FRONT

|                       |           |
|-----------------------|-----------|
| Front dimension:      | Ø 35 mm   |
| Front form:           | Round     |
| Front bezel colour:   | Nature    |
| Front bezel material: | Aluminium |

### MOUNTING

|                   |                |
|-------------------|----------------|
| Design:           | Flush          |
| Mounting cut-out: | Ø 30.5 mm      |
| Mounting type:    | Panel mounting |

### OPERATING-/INDICATION PART

|                             |              |
|-----------------------------|--------------|
| Lens colour:                | Green        |
| Lens material:              | Plastic      |
| Lens shape:                 | Flush        |
| Lens optics:                | transparent  |
| Marking plate illumination: | illuminative |

### ELECTRICAL CHARACTERISTICS

|            |   |
|------------|---|
| Standards: | The switches comply with the "Standards for low-voltage switching devices" DIN EN 60947-1 |
|------------|---|

### MECHANICAL CHARACTERISTICS

|           |                |
|-----------|----------------|
| Terminal: | Screw terminal |
|-----------|----------------|

**Weight:** 0.061 kg

## AMBIENT CONDITION

**IP Protection:** IP65 front side

**Operating temperature:** – 40 °C ... + 55 °C

**Storage temperature:** – 40 °C ... + 85 °C

## CERTIFICATE

**REACH:** REACH compliant

**RoHS:** RoHS compliant

## OTHER

**Short Description:** Actuator, Ø 30.5 mm, Ø 35 mm, Flush, Green, Plastic, transparent, Round, Nature, Aluminium, anodised, Screw terminal

**Housing colour:** Grey

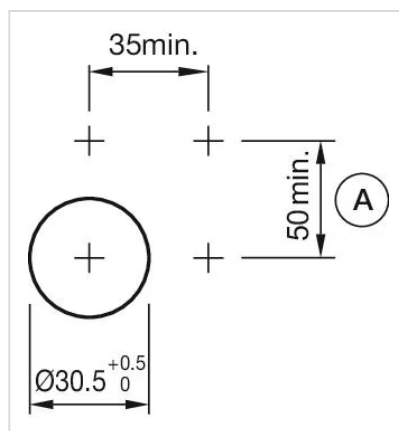
**Housing material:** Plastic

**Hints:** The colour of anodised aluminium parts can vary due to technical production reasons

**Wiring diagrams:**

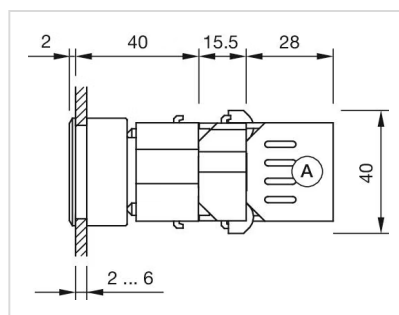


### Mounting cut-outs:



A = Screw terminal

### Dimension drawings:



A = Screw terminal

