

Switching element

70-101.0

Distribution by
DigiKey

DigiKey



<https://digikey.eao.com/p/70-101.0>

Your product:



70-101.0

Switching element

ELECTRICAL CHARACTERISTICS

Switching voltage and switching current:

max. 12 VDC, 50 mA
min. 1 VDC, 10 mA

Contacts:

1 NO

Switching rating:

42 V @ 0,1 A

Electrical lifetime:

500 000 cycles of operation at 5VDC, 1mA

Electric strength:

250 VAC, 1 minute

MECHANICAL CHARACTERISTICS

Terminal:

PCB terminal

Contact material:

Silver

Switching action:

Momentary

Switching system:

Short-travel element

Switching system:

Short-travel snap-action switching system with two independent contact points and tactile operation
Guarantees reliable switching even of very light loads.
1 normally open contact

Mechanical lifetime:

500 000 cycles of operation with decor foil

Operating force:

5 N \pm 2 N with decor foil, >50 N max. on button centre with test plunger, according to DIN 42115

Operating Travel:

0.3 mm

Weight:

0.001 kg

AMBIENT CONDITION

IP Protection:

IP65 (front side with overlay foil)

Operating temperature:

- 20 °C ... + 70 °C

Storage temperature: – 30 °C ... + 85 °C

CERTIFICATE

Conformities: CE, UKCA, 2011 / 65 / EC (RoHS)

REACH: REACH compliant

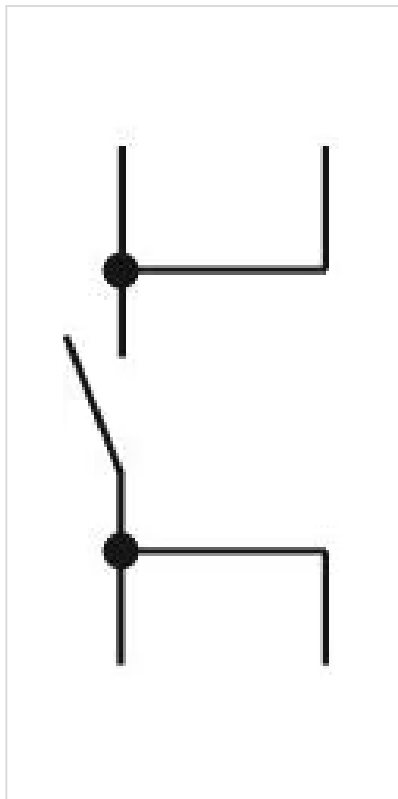
RoHS: RoHS compliant

OTHER

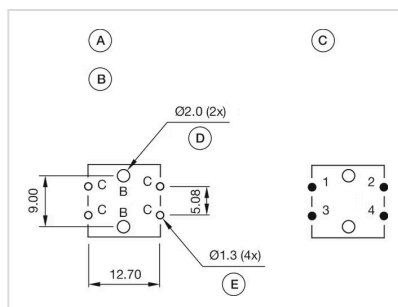
Short Description: Switching element, Short-travel element, 42 V @ 0,1 A, Silver, 1 NO, PCB terminal

Product attributes: Operation with spacing cap

Wiring diagrams:



Component layouts:



A = Switching element without illumination with
B = Drilling plan (component side)
C = Occupancy plan (component side)
D = Hole for centering pins non-metallic
E = Hole for switching element

Dimension drawings:

