

Switching element

70-100.0

Distribution by
DigiKey

DigiKey



<https://digikey.eao.com/component/70-100.0/en...>

Your product:



70-100.0 Switching element

Loading ...

ELECTRICAL CHARACTERISTICS

Switching voltage and switching current:

max. 12 VDC, 50 mA
min. 1 VDC, 10 mA

Contacts:

1 NO

Forward voltage:

Switching rating:

42 V @ 0,1 A

Electrical lifetime:

500 000 cycles of operation at 5VDC, 1mA

Electric strength:

250 VAC, 1 minute

MECHANICAL CHARACTERISTICS

Terminal:

PCB terminal

Contact material:

Silver

Switching action:

Momentary

Switching system:

Short-travel element

Switching system:

Short-travel snap-action switching system with two independent contact points and tactile operation
Guarantees reliable switching even of very light loads.
1 normally open contact

Mechanical lifetime:

500 000 cycles of operation with decor foil

Operating force:

5 N \pm 2 N with decor foil, >50 N max. on button centre with test plunger, according to DIN 42115

Operating Travel:

0.3 mm

Weight:

0.001 kg

AMBIENT CONDITION

IP Protection:

IP65 (front side with overlay foil)

Operating temperature: - 20 °C ... + 70 °C

Storage temperature: - 30 °C ... + 85 °C

CERTIFICATE

Conformities: CE, UKCA, 2011 / 65 / EC (RoHS)

REACH: REACH compliant

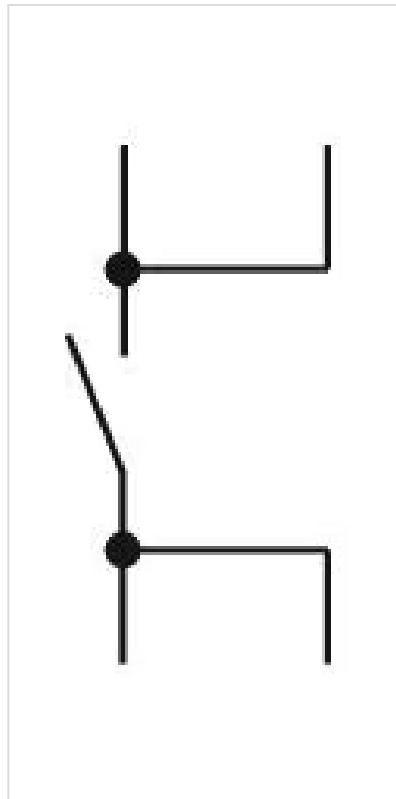
RoHS: RoHS compliant

OTHER

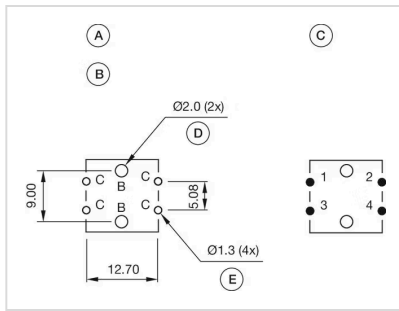
Short Description: Switching element, Short-travel element, 42 V @ 0,1 A, Silver, 1 NO, PCB terminal

Product attributes: Operation without spacing cap

Wiring diagrams:



Component layouts:



- A = Switching element without illumination with
- B = Drilling plan (component side)
- C = Occupancy plan (component side)
- D = Hole for centering pins non-metallic
- E = Hole for switching element

Dimension drawings:

