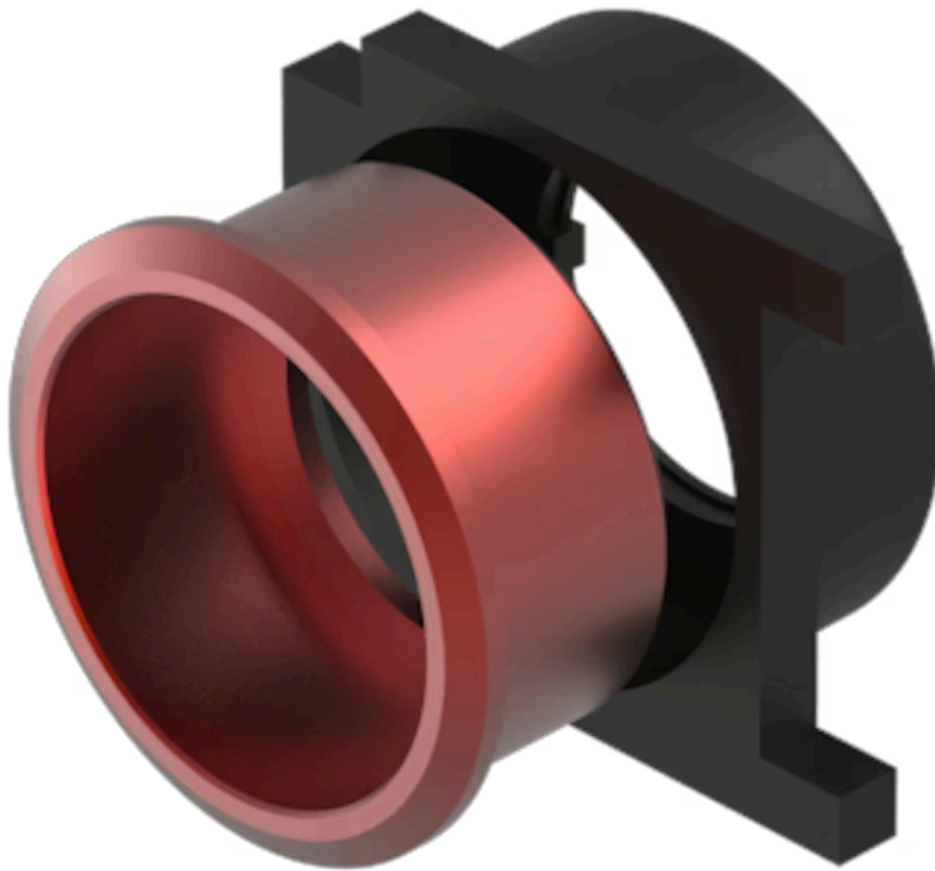


Front bezel set

61-9933.2

Distribution by
DigiKey

DigiKey



<https://digikey.eao.com/component/61-9933.2/e...>

Your product:



61-9933.2 Front bezel set

Loading . . .

FRONT

Front dimension:	Ø 25 mm
Front form:	Round
Front bezel colour:	Red
Front bezel material:	Aluminium

MOUNTING

Mounting cut-out:	Ø 22.5 mm
Mounting type:	Panel mounting

MECHANICAL CHARACTERISTICS

Weight:	0.004 kg
----------------	----------

CERTIFICATE

REACH:	REACH compliant
RoHS:	RoHS compliant

OTHER

Short Description:	Front bezel set, Ø 25 mm, Ø 19,7 mm, Red, Aluminium
Dimension:	Ø 25 mm
Internal size:	Ø 19,7 mm
Product attributes:	For indicator, push button, illuminated push button

Hints:	The colour of anodised aluminium parts can vary due to technical production reasons
---------------	---

Mounting cut-outs:

