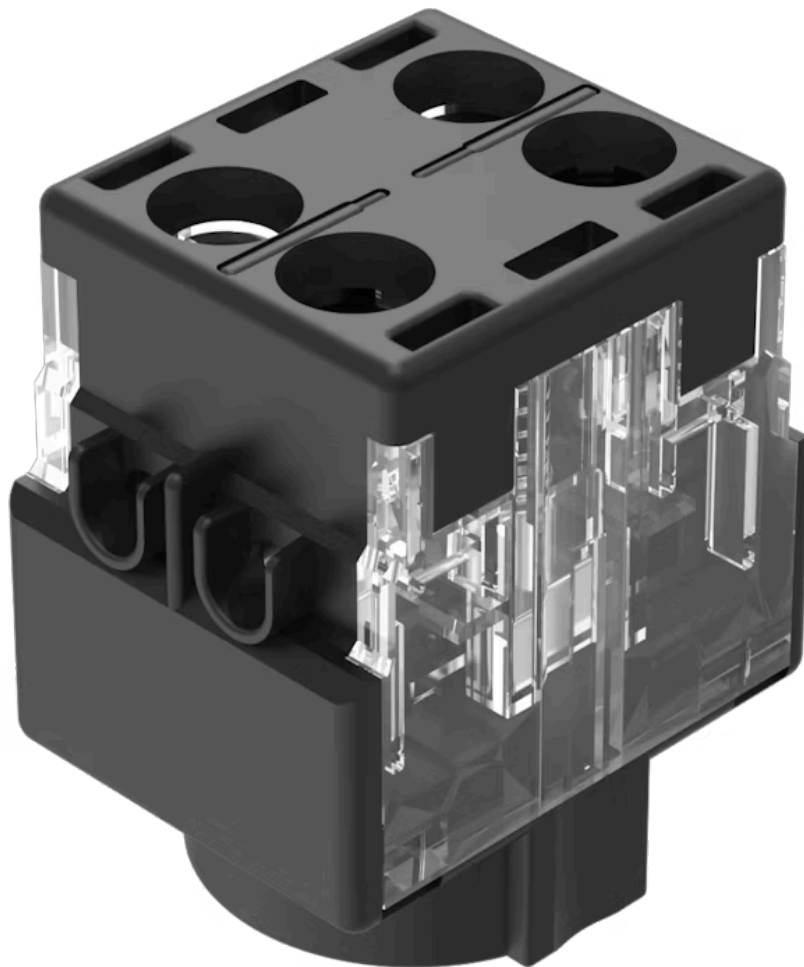


# Switching element

61-8775.11

Distribution by  
DigiKey

**DigiKey**



<https://digikey.eao.com/component/61-8775.11/...>

Your product:



## 61-8775.11 Switching element

Loading ...

### ELECTRICAL CHARACTERISTICS

**Switching voltage and switching current:**

|                                      |         |         |
|--------------------------------------|---------|---------|
| Switch rating AC with silver contact |         |         |
| Service category AC-15               |         |         |
| according to EN IEC 60947-5-1        |         |         |
| Voltage                              | 125 VAC | 250 VAC |
| Current                              | 3 A     | 2 A     |
| Switch rating DC with silver contact |         |         |
| Service category DC-13               |         |         |
| according to EN IEC 60947-5-1        |         |         |
| Voltage                              | 250 VDC |         |
| Current                              | 0.2 A   |         |

**Contacts:**

1 NC / 1 NO

**Contact resistance:**

New state  $\leq 50 \text{ m}\Omega$ , as per DIN/IEC 60512-2-4, measured at 100 mA, 10 V

**Rated Operational Voltage  $U_e$ :**

250 VAC/DC according to EN IEC 60947-1

**Rated impulse withstand voltage  $U_{imp}$ :**

4 kV, according to EN/IEC 60947-5-1

**Rated insulation voltage  $U_i$ :**

320 VAC, according to EN / IEC 60947-5-1

**Short circuit protective device:**

fuse / 500 V / 10 A / gG

**Rated short-circuit current caused:**

AC: 1 kA  
DC: 1 kA

**Recommended minimum operational data:**

|         |           |
|---------|-----------|
| Voltage | 20 VAC/DC |
| Current | 100 mA    |

**Switching rating:**

250 V AC/DC @ 5 A

**Electrical lifetime:**

$\geq 50\,000$  cycles of operation at 250VAC, 2A,  $\cos\phi$  0.95,

**Electric strength:**

4000 VAC, 50 Hz, 1 minute, as per DIN / IEC 60512-2 between all terminals and earth

**Overvoltage category:**

III, according to EN / IEC 60947-5-1

**Pollution degree:**

3, according to EN IEC 60947-1

**Protection class:**

II, according to EN / IEC 61058-1

**Standards:**

The switches comply with the "Standards for low-voltage switching devices" EN IEC 60947-5-1

**Thermal current  $I_{th}$ :**

5 A, according to EN / IEC 60947-5-1

## MECHANICAL CHARACTERISTICS

|                             |   |
|-----------------------------|---|
| <b>Terminal:</b>            | Screw terminal  |
| <b>Contact material:</b>    | Silver  |
| <b>Switching system:</b>    | Slow-make switching element   |
| <b>Switching system:</b>    | Double-break slow-make system, contact opening width 2 x 1.5 mm, with 2 x 2 contact points per switching element.<br>NC-contact elements in the slow-make elements fulfill requirements of switches with forced opening as per EN / IEC 60947-5-12.17.                  |
| <b>Switching positions:</b> | 3 positions   |
| <b>Wire cross section:</b>  | 1 wire flexible: 0.5 ... 0.75 mm <sup>2</sup><br>1 wire super flexible: 0.5 mm <sup>2</sup><br>1 wire rigid: 0.5 ... 1.5 mm <sup>2</sup><br>2 wires super flexible: 0.5 mm <sup>2</sup><br>2 wires flexible: 0.5 mm <sup>2</sup><br>2 wires rigid: 0.75 mm <sup>2</sup> |
| <b>Weight:</b>              | 0.016 kg  |

## AMBIENT CONDITION

|                               |   |
|-------------------------------|---|
| <b>IP Protection:</b>         | IP40  |
| <b>Operating temperature:</b> | - 25 °C ... + 55 °C   |
| <b>Storage temperature:</b>   | - 40 °C ... + 85 °C   |
| <b>Shock resistance:</b>      | Max. 100 m / s <sup>2</sup> , pulse width, 3-axis (sinusoidal EN IEC 60068-2-27)  |
| <b>Vibration resistance:</b>  | Max. 100 m / s <sup>2</sup> from 10 Hz ... 500 Hz, (sinusoidal EN IEC 60068-2-6)  |
| <b>Climate resistance:</b>    | Damp heat, cyclic: 96 hours, + 25 °C/97 %, + 55 °C/93 % relative humidity, as per EN IEC 60068-2-30<br>Damp heat, steady: 56 days, + 40 °C/93 % relative humidity, according to EN IEC 60068-2-78<br>Rapid change of temperature: 100 cycles, - 40 °C ... + 80 °C, as per EN / IEC 60068-2-14 |

## CERTIFICATE

|                      |   |
|----------------------|---|
| <b>Approbations:</b> | CB (IEC 61058-1), CQC, CSA, DNV, ENEC (EN 61058-1), UL, VDE |
| <b>Conformities:</b> | CE, UKCA, 2011 / 65 / EC (RoHS), 2014 / 35 / EU (LVD)       |
| <b>REACH:</b>        | REACH compliant   |
| <b>RoHS:</b>         | RoHS compliant  |

## OTHER

**Short Description:**

Switching element, Slow-make switching element, 250 V AC/DC @ 5 A, Silver, 1 NC / 1 NO, Screw terminal

**Material:**

Plastic, according to UL 94 V0

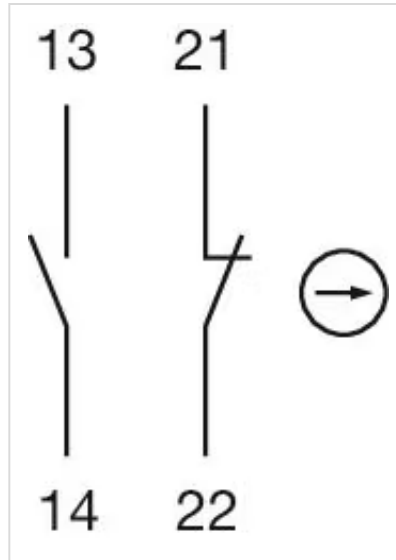
**Product attributes:**

Without lamp terminal

**Hints:**

Without lamp terminal

**Wiring diagrams:**



**Component layouts:**

