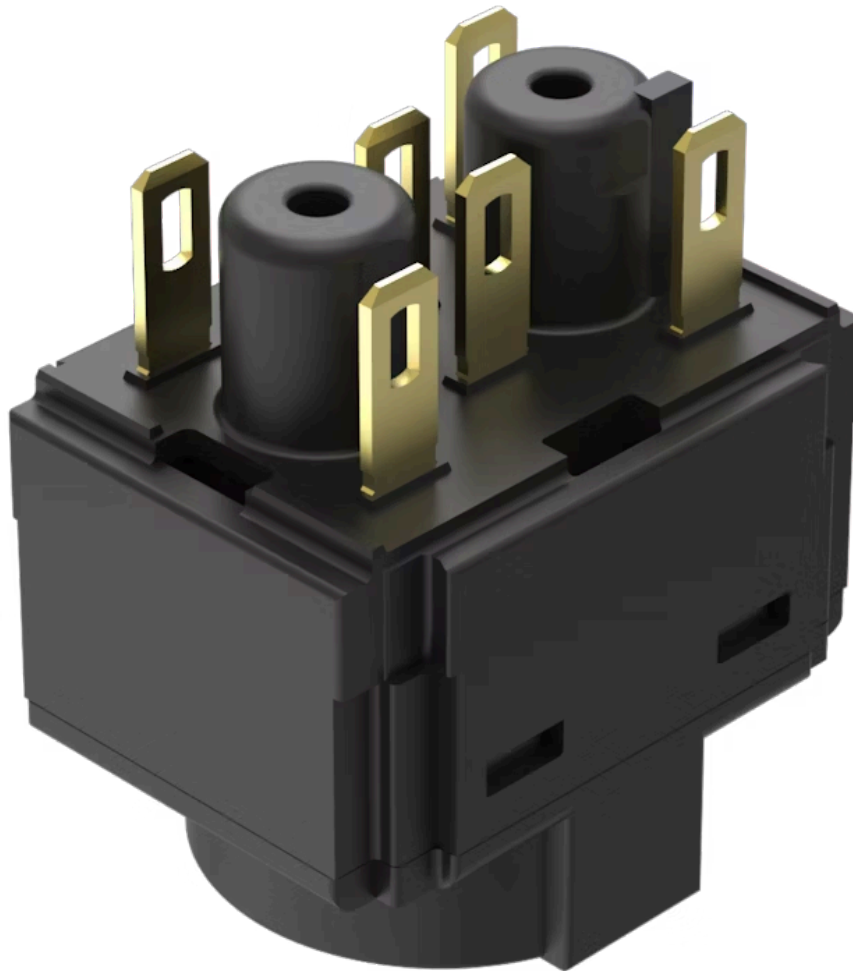


# Switching element

61-8750.37

Distribution by  
DigiKey

**DigiKey**



<https://digikey.eao.com/p/61-8750.37>

Your product:



## 61-8750.37 Switching element

### ELECTRICAL CHARACTERISTICS

<b>Contacts:</b>	2 NC
<b>Switching voltage and switching current:</b>	Switch rating AC with gold contact Service category AC-15 according to EN IEC 60947-5-1 Voltage 50 VAC Current 0.5 A Switch rating DC with gold contact Service category DC-13 according to EN IEC 60947-5-1 Voltage 50 VDC Current 0.1 A
<b>Rated Operational Voltage Ue:</b>	50 VAC / DC, according to EN / IEC 60947-5-1
<b>Rated impulse withstand voltage Uimp:</b>	0,8 kV, according to EN / IEC 60947-5-1
<b>Rated insulation voltage Ui:</b>	320 VAC, according to EN / IEC 60947-5-1
<b>Recommended minimum operational data:</b>	Voltage 10 VAC/DC Current 2 mA
<b>Switching rating:</b>	50 V AC/DC @ 0,3 A
<b>Electric strength:</b>	4000 VAC, 50 Hz, 1 minute, as per DIN / IEC 60512-2 between all terminals and earth
<b>Overvoltage category:</b>	III, according to EN / IEC 60947-5-1
<b>Pollution degree:</b>	3, according to EN IEC 60947-1
<b>Protection class:</b>	II, according to EN / IEC 61058-1
<b>Standards:</b>	The switches comply with the "Standards for low-voltage switching devices" EN IEC 61058-1, EN IEC 60947-5-1
<b>Thermal current Ith:</b>	3 A

### MECHANICAL CHARACTERISTIC

<b>Terminal:</b>	Plug-in terminal, 2.8 x 0.5 mm
<b>Contact material:</b>	Gold

<b>Switching system:</b>	Slow-make switching element
<b>Switching system:</b>	Double-break slow-make system, contact opening width 2 x 1.5 mm, with 2 x 2 contact points per switching element. NC-contact elements in the slow-make elements fulfill requirements of switches with forced opening as per EN / IEC 60947-5-12.17.
<b>Switching positions:</b>	3 positions
<b>Wire cross section:</b>	1 wire flexible: 0.5 ... 0.75 mm <sup>2</sup> 1 wire super flexible: 0.5 mm <sup>2</sup> 1 wire rigid: 0.5 ... 1.5 mm <sup>2</sup> 2 wires flexible: 0.5 ... 0.75 mm <sup>2</sup> 2 wires super flexible: 0.5 mm <sup>2</sup> 2 wires rigid: 0.5 ... 1.5 mm <sup>2</sup>
<b>Weight:</b>	0.008 kg

## AMBIENT CONDITION

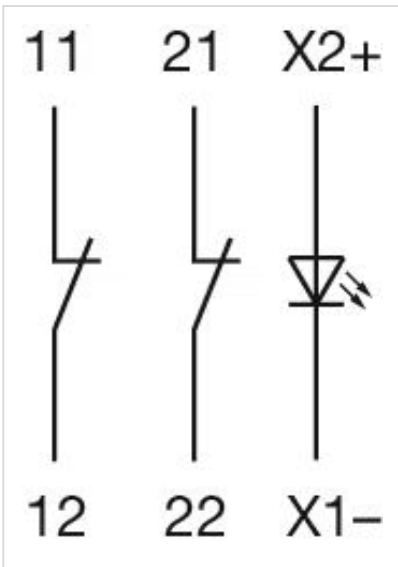
<b>IP Protection:</b>	IP40
<b>Operating temperature:</b>	- 25 °C ... + 55 °C
<b>Storage temperature:</b>	- 40 °C ... + 85 °C
<b>Shock resistance:</b>	Max. 100 m / s <sup>2</sup> , pulse width, 3-axis (sinusoidal EN IEC 60068-2-27)
<b>Vibration resistance:</b>	Max. 100 m / s <sup>2</sup> from 10 Hz ... 500 Hz, (sinusoidal EN IEC 60068-2-6)
<b>Climate resistance:</b>	Damp heat, cyclic: 96 hours, + 25 °C/97 %, + 55 °C/93 % relative humidity, as per EN IEC 60068-2-30 Damp heat, steady: 56 days, + 40 °C/93 % relative humidity, according to EN IEC 60068-2-78 Rapid change of temperature: 100 cycles, - 40 °C ... + 80 °C, as per EN / IEC 60068-2-14

## CERTIFICATE

<b>Approbations:</b>	CB (IEC 60947-5-1), CB (IEC 61058-1), CENELEC CCA-NTR (EN 60947-5-1), CQC, CSA, DNV, EAC, ENEC (EN 61058-1), NFF, SEV (EN / IEC 60947-5-1), UL
<b>Conformities:</b>	CE, UKCA, 2011 / 65 / EC (RoHS), 2014 / 35 / EU (LVD)
<b>REACH:</b>	REACH compliant
<b>RoHS:</b>	RoHS compliant

## OTHER

<b>Short Description:</b>	Switching element, Slow-make switching element, 50 V AC/DC @ 0,3 A, Gold, 2 NC, Plug-in terminal, 2.8 x 0.5 mm
<b>Material:</b>	Plastic, according to UL 94 V0
<b>Hints:</b>	With lamp terminal
<b>Wiring diagrams:</b>	



Component layouts:

