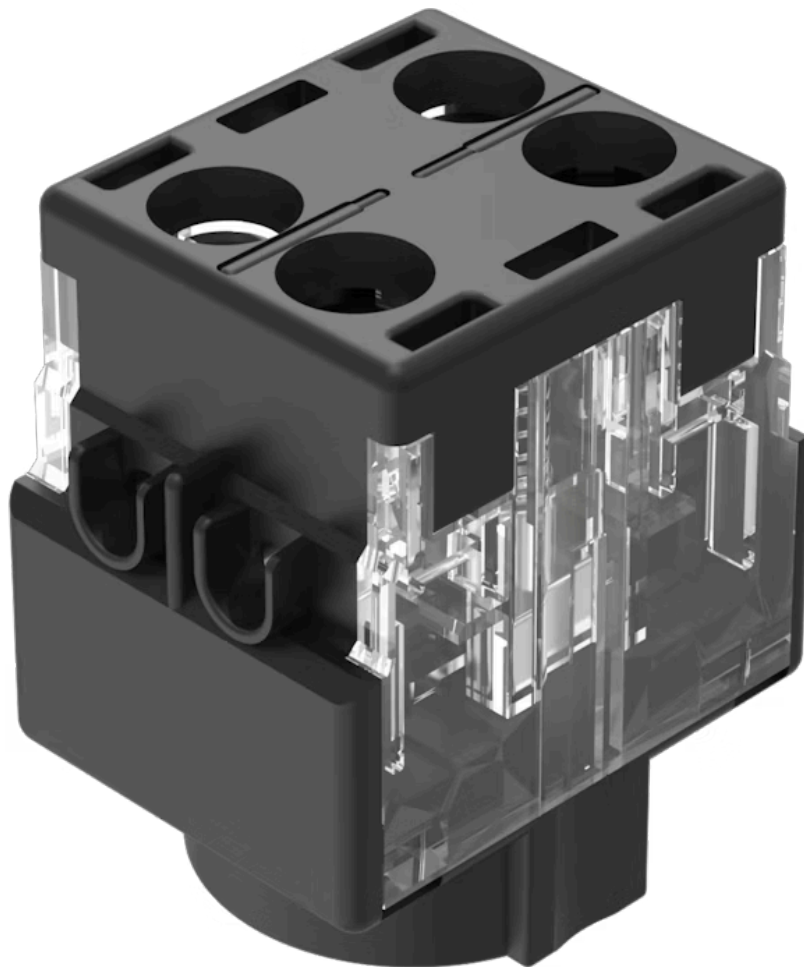


# Switching element

61-8745.11

Distribution by  
DigiKey

**DigiKey**



<https://digikey.eao.com/component/61-8745.11/...>

Your product:



## 61-8745.11 Switching element

*Loading ...*

### ELECTRICAL CHARACTERISTICS

**Switching voltage and switching current:**

Switch rating AC with silver contact Service category AC-15 according to EN IEC 60947-5-1		
Voltage	125 VAC	250 VAC
Current	3 A	2 A
Switch rating DC with silver contact Service category DC-13 according to EN IEC 60947-5-1		
Voltage	250 VDC	
Current	0.2 A	

**Contacts:**

1 NC

**Contact resistance:**

New state  $\leq 50 \text{ m}\Omega$ , as per DIN/IEC 60512-2-4, measured at 100 mA, 10 V

**Rated Operational Voltage  $U_e$ :**

250 VAC/DC according to EN IEC 60947-1

**Rated impulse withstand voltage  $U_{imp}$ :**

4 kV, according to EN/IEC 60947-5-1

**Rated insulation voltage  $U_i$ :**

320 VAC, according to EN / IEC 60947-5-1

**Short circuit protective device:**

fuse / 500 V / 10 A / gG

**Rated short-circuit current caused:**

AC: 1 kA  
DC: 1 kA

**Recommended minimum operational data:**

Voltage	20 VAC/DC
Current	100 mA

**Switching rating:**

250 V AC/DC @ 5 A

**Electrical lifetime:**

$\geq 50\,000$  cycles of operation at 250VAC, 2A,  $\cos\phi$  0.95,

**Electric strength:**

4000 VAC, 50 Hz, 1 minute, as per DIN / IEC 60512-2 between all terminals and earth

**Overvoltage category:**

III, according to EN / IEC 60947-5-1

**Pollution degree:**

3, according to EN IEC 60947-1

**Protection class:**

II, according to EN / IEC 61058-1

**Standards:**

The switches comply with the "Standards for low-voltage switching devices" EN IEC 60947-5-1

**Thermal current  $I_{th}$ :**

5 A, according to EN / IEC 60947-5-1

## MECHANICAL CHARACTERISTICS

<b>Terminal:</b>	Screw terminal
<b>Contact material:</b>	Silver
<b>Switching system:</b>	Slow-make switching element
<b>Switching system:</b>	Double-break slow-make system, contact opening width 2 x 1.5 mm, with 2 x 2 contact points per switching element. NC-contact elements in the slow-make elements fulfill requirements of switches with forced opening as per EN / IEC 60947-5-12.17.
<b>Switching positions:</b>	3 positions
<b>Wire cross section:</b>	1 wire flexible: 0.5 ... 0.75 mm <sup>2</sup> 1 wire super flexible: 0.5 mm <sup>2</sup> 1 wire rigid: 0.5 ... 1.5 mm <sup>2</sup> 2 wires super flexible: 0.5 mm <sup>2</sup> 2 wires flexible: 0.5 mm <sup>2</sup> 2 wires rigid: 0.75 mm <sup>2</sup>
<b>Weight:</b>	0.013 kg

## AMBIENT CONDITION

<b>IP Protection:</b>	IP40
<b>Operating temperature:</b>	- 25 °C ... + 55 °C
<b>Storage temperature:</b>	- 40 °C ... + 85 °C
<b>Shock resistance:</b>	Max. 100 m / s <sup>2</sup> , pulse width, 3-axis (sinusoidal EN IEC 60068-2-27)
<b>Vibration resistance:</b>	Max. 100 m / s <sup>2</sup> from 10 Hz ... 500 Hz, (sinusoidal EN IEC 60068-2-6)
<b>Climate resistance:</b>	Damp heat, cyclic: 96 hours, + 25 °C/97 %, + 55 °C/93 % relative humidity, as per EN IEC 60068-2-30 Damp heat, steady: 56 days, + 40 °C/93 % relative humidity, according to EN IEC 60068-2-78 Rapid change of temperature: 100 cycles, - 40 °C ... + 80 °C, as per EN / IEC 60068-2-14

## CERTIFICATE

<b>Approbations:</b>	CB (IEC 61058-1), CQC, CSA, DNV, ENEC (EN 61058-1), UL, VDE
<b>Conformities:</b>	CE, UKCA, 2011 / 65 / EC (RoHS), 2014 / 35 / EU (LVD)
<b>REACH:</b>	REACH compliant
<b>RoHS:</b>	RoHS compliant

## OTHER

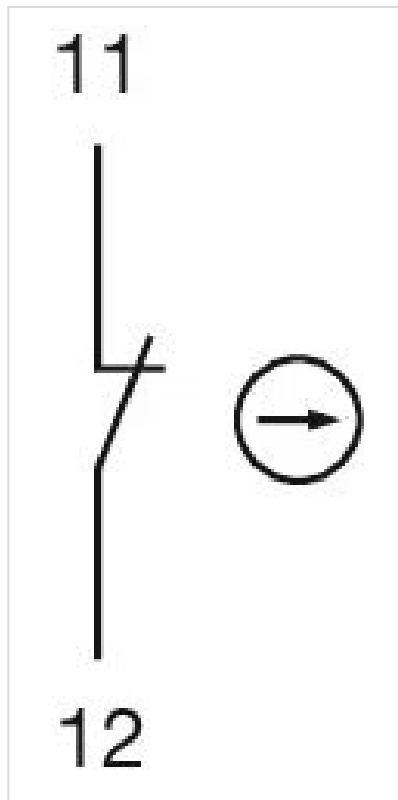
**Short Description:**

Switching element, Slow-make switching element, 250 V AC/DC @ 5 A, Silver, 1 NC, Screw terminal

**Material:**

Plastic, according to UL 94 V0

**Wiring diagrams:**



**Component layouts:**

