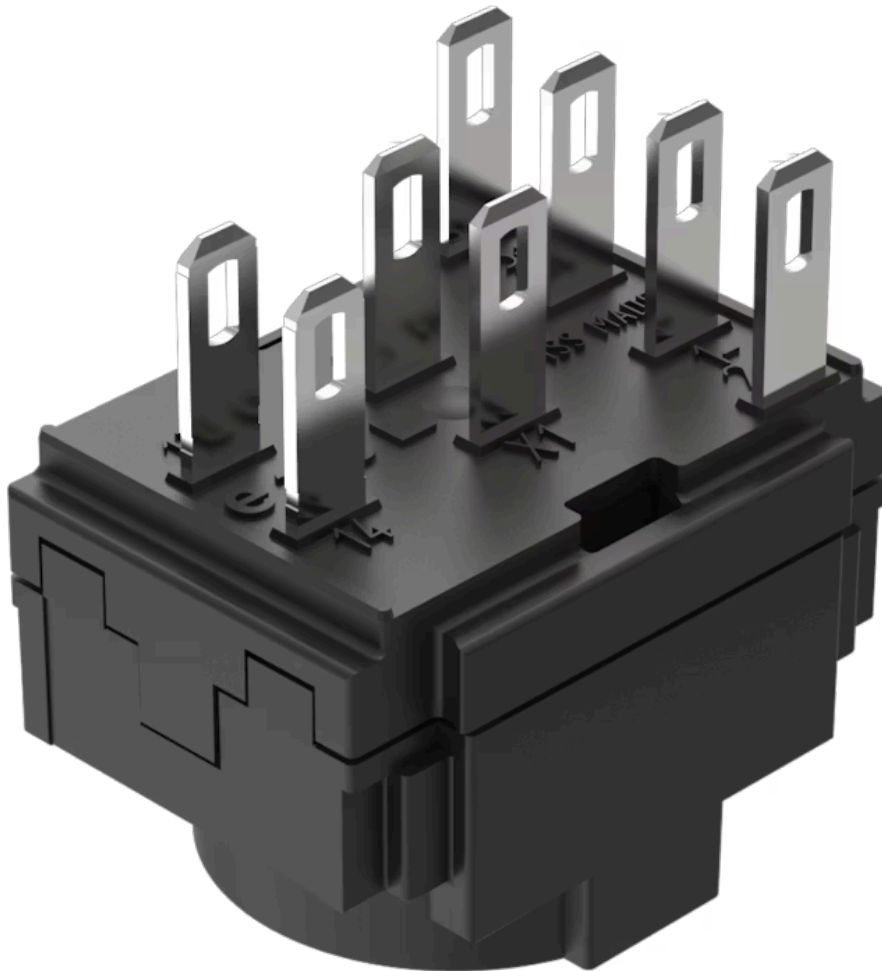


# Switching element

61-8490.12

Distribution by  
DigiKey

**DigiKey**



<https://digikey.eao.com/component/61-8490.12/...>

Your product:



## 61-8490.12 Switching element

Loading ...

### ELECTRICAL CHARACTERISTICS

**Switching voltage and switching current:**

Switch rating AC with silver contact or silver contact with gold plating	
Service category AC-15 according to EN IEC 60947-5-1	
Voltage	125 VAC
Current	2.5 A
Switch rating DC with silver contact or silver contact with gold plating	
Service category DC-13 according to EN IEC 60947-5-1	
Voltage	250 VDC
Current	0.15 A

**Contacts:**

1 NC / 2 NO

**Rated Operational Voltage U<sub>e</sub>:**

250 VAC/DC according to EN IEC 60947-1

**Rated impulse withstand voltage U<sub>imp</sub>:**

4 kV, according to EN/IEC 60947-5-1

**Rated insulation voltage U<sub>i</sub>:**

320 VAC, according to EN / IEC 60947-5-1

**Recommended minimum operational data:**

Voltage	20 VAC/DC
Current	100 mA

**Switching rating:**

150 V AC/DC @ 5 A

**Electrical lifetime:**

≥50 000 cycles of operation at 250VAC, 2A, cosφ 0.95,

**Electric strength:**

2500 VAC, 50 Hz, 1 minute, as per DIN / IEC 60512-2 between all terminals and earth

**Overvoltage category:**

III, according to EN / IEC 60947-5-1

**Pollution degree:**

2, according to EN IEC 60947-1

**Protection class:**

II, according to EN / IEC 61058-1

**Standards:**

The switches comply with the "Standards for low-voltage switching devices" EN IEC 61058-1, EN IEC 60947-5-1

**Thermal current I<sub>th</sub>:**

5 A

### MECHANICAL CHARACTERISTICS

<b>Terminal:</b>	Plug-in terminal, 2.8 x 0.5 mm
<b>Contact material:</b>	Silver
<b>Switching system:</b>	Snap-action switching element
<b>Switching system:</b>	Self-cleaning, double-break snap-action switching system with contact opening width 2mm x 0.5mm (switch with small contact opening width as per EN IEC 61058-1). The switching elements are optionally equipped with the following switching functions: One to three normally open (NO) or normally closed (NC), or any combination of NO and NC plus connections for T1 3/4 LED or lamp. The number of switching elements cannot exceed three. The switching elements provided for the 3-position switch actuators are equipped with max. 2 NC or 2 NO or any combination. The number of switching elements cannot exceed two.
<b>Switching positions:</b>	2 positions
<b>Wire cross section:</b>	1 wire flexible: 0.5 ... 0.75 mm <sup>2</sup> 1 wire super flexible: 0.5 mm <sup>2</sup> 1 wire rigid: 0.5 ... 1.5 mm <sup>2</sup> 2 wires rigid: 0.75 mm <sup>2</sup> 2 wires flexible: 0.5 mm <sup>2</sup>
<b>Weight:</b>	0.006 kg

#### AMBIENT CONDITION

<b>Operating temperature:</b>	- 25 °C ... + 55 °C
<b>Storage temperature:</b>	- 40 °C ... + 85 °C
<b>Shock resistance:</b>	Max. 100 m / s <sup>2</sup> , pulse width, 3-axis (sinusoidal EN IEC 60068-2-27)
<b>Vibration resistance:</b>	Max. 100 m / s <sup>2</sup> from 10 Hz ... 500 Hz, (sinusoidal EN IEC 60068-2-6)
<b>Climate resistance:</b>	Damp heat, cyclic: 96 hours, + 25 °C/97 %, + 55 °C/93 % relative humidity, as per EN IEC 60068-2-30 Damp heat, steady: 56 days, + 40 °C/93 % relative humidity, according to EN IEC 60068-2-78 Rapid change of temperature: 100 cycles, - 40 °C ... + 80 °C, as per EN / IEC 60068-2-14

#### CERTIFICATE

<b>Approbations:</b>	CB (IEC 61058-1), CQC, CSA, DNV, ENEC (EN 61058-1), UL, VDE
<b>Conformities:</b>	CE, UKCA, 2011 / 65 / EC (RoHS), 2014 / 35 / EU (LVD)
<b>REACH:</b>	REACH compliant
<b>RoHS:</b>	RoHS compliant

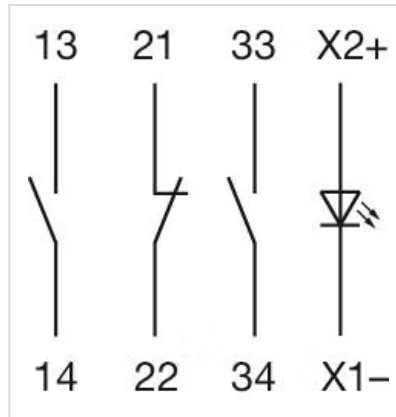
#### OTHER

<b>Short Description:</b>	Switching element, Snap-action switching element, 150 V AC/DC @ 5 A, Silver, 1 NC / 2 NO, Plug-in terminal, 2.8 x 0.5 mm
<b>Material:</b>	Plastic, according to UL 94 V0

Hints:

With lamp terminal

Wiring diagrams:



Component layouts:

