

# Actuator

61-1240.0

Distribution by  
DigiKey

**DigiKey**



<https://digikey.eao.com/p/61-1240.0>

Your product:

---



## 61-1240.0 Actuator

### FRONT

Front bezel colour:	Black
Front bezel material:	Plastic

### MOUNTING

Mounting type:	Panel mounting
----------------	----------------

### OPERATING-/INDICATION PART

Lens illumination:	Illuminated
--------------------	-------------

### MECHANICAL CHARACTERISTICS

Switching action:	Maintained
Mechanical lifetime:	According to DIN/IEC 60512-5-6 and EN/IEC 60947-5-1, 1 Mil. cycles of operation
Operating force:	3 N ... 5 N snap-action switching element, 3.5 ... 11 N slow-make switching element
Operating Travel:	3 mm
Tightening torque:	Max. 0.5 Nm
Weight:	0.005 kg

### AMBIENT CONDITION

IP Protection:	IP40 rear side, according to EN IEC 60529, IP67 front side, according to EN IEC 60529
Operating temperature:	- 25 °C ... + 55 °C
Storage temperature:	- 40 °C ... + 85 °C

## CERTIFICATE

**REACH:** REACH compliant

**RoHS:** RoHS compliant

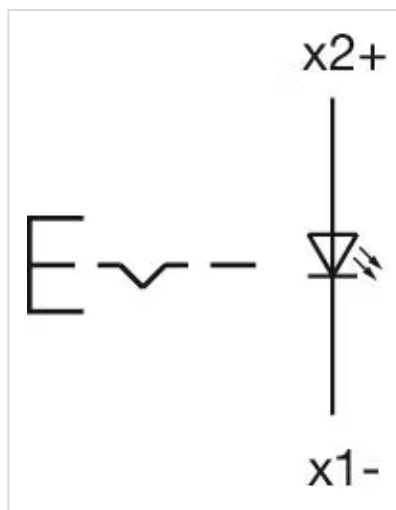
## OTHER

**Short Description:** Actuator, Illuminated, Black, Plastic, Maintained

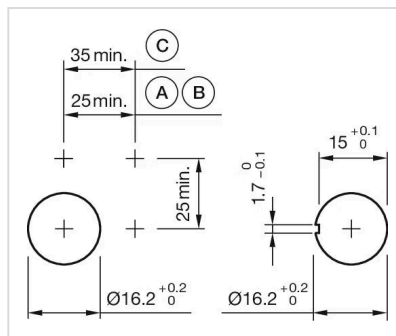
**Housing colour:** Black

**Housing material:** Plastic, according to UL 94 V0, self-extinguishing

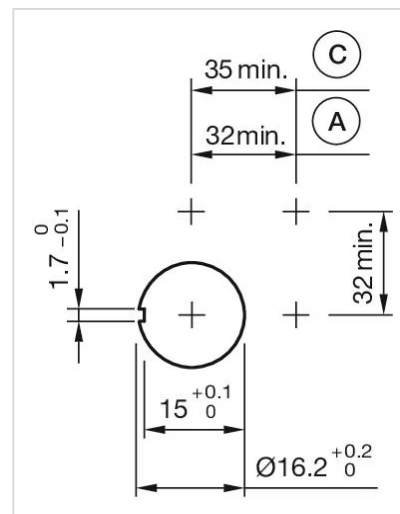
**Wiring diagrams:**



**Mounting cut-outs:**

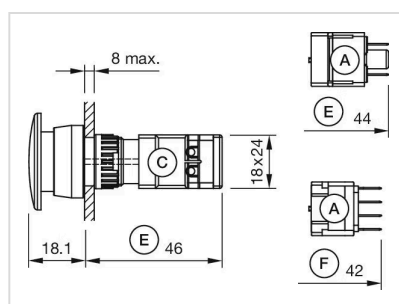


A = Solder/Plug-in terminal 2.8 mm x 0.5 mm  
B = Solder terminal  
C = Screw terminal

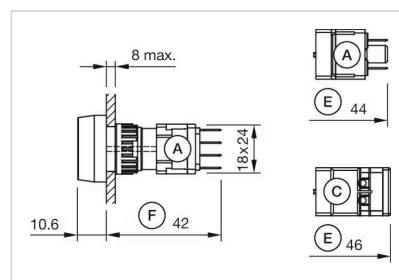


A = Solder/Plug-in terminal 2.8 mm x 0.5 mm  
C = Screw terminal

# **Dimension drawings:**



A = Plug-in terminal 2.8 mm x 0.5 mm  
 C = Screw terminal  
 E = Slow-make switching element  
 F = Snap-action switching element



A = Plug-in terminal 2.8 mm x 0.5 mm  
 C = Screw terminal  
 E = Slow-make switching element  
 F = Snap-action switching element