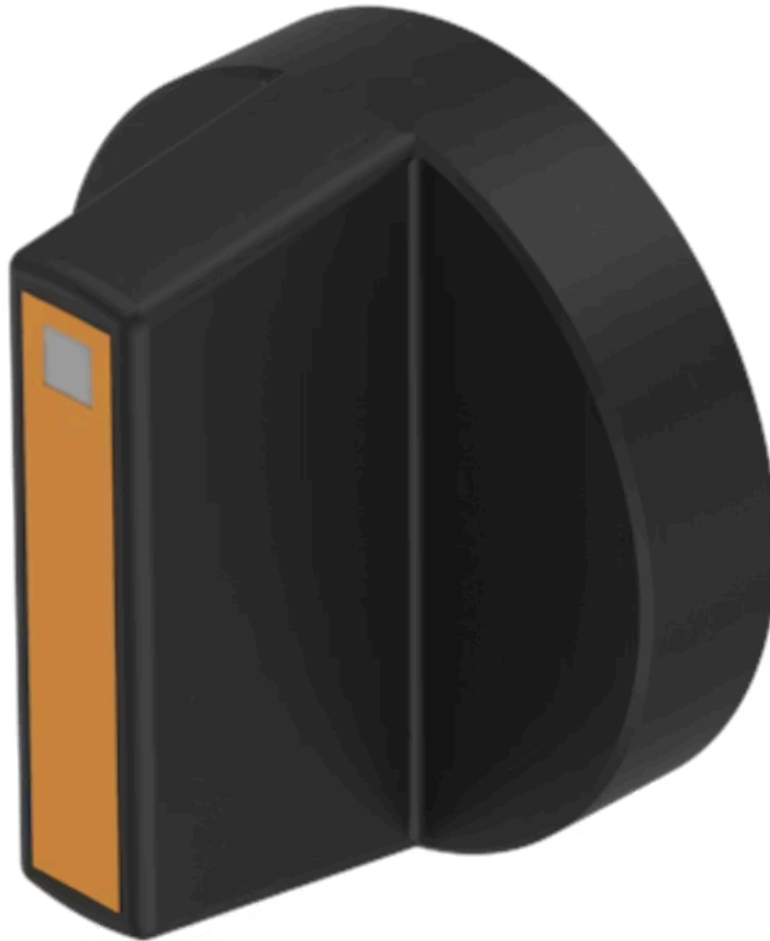


# Lever

52-  
928.30

Distribution by  
DigiKey

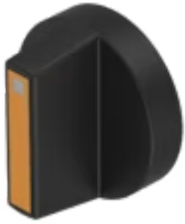
**DigiKey**



<https://digikey.eao.com/component/52-928.30/e...>

Your product:

---



52-928.30

Lever

*Loading ...*

#### **OPERATING-/INDICATION PART**

<b>Lever colour:</b>	Black
<b>Lever bar colour:</b>	Orange
<b>Lever material:</b>	plastic
<b>Lever shape:</b>	short

#### **MECHANICAL CHARACTERISTICS**

<b>Weight:</b>	0.001 kg
----------------	----------

#### **CERTIFICATE**

<b>REACH:</b>	REACH compliant
<b>RoHS:</b>	RoHS compliant

#### **OTHER**

<b>Short Description:</b>	Lever, illuminative, Orange, Black, short, plastic
<b>Product attributes:</b>	With bar and marking dot
<b>Hints:</b>	With bar and marking dot