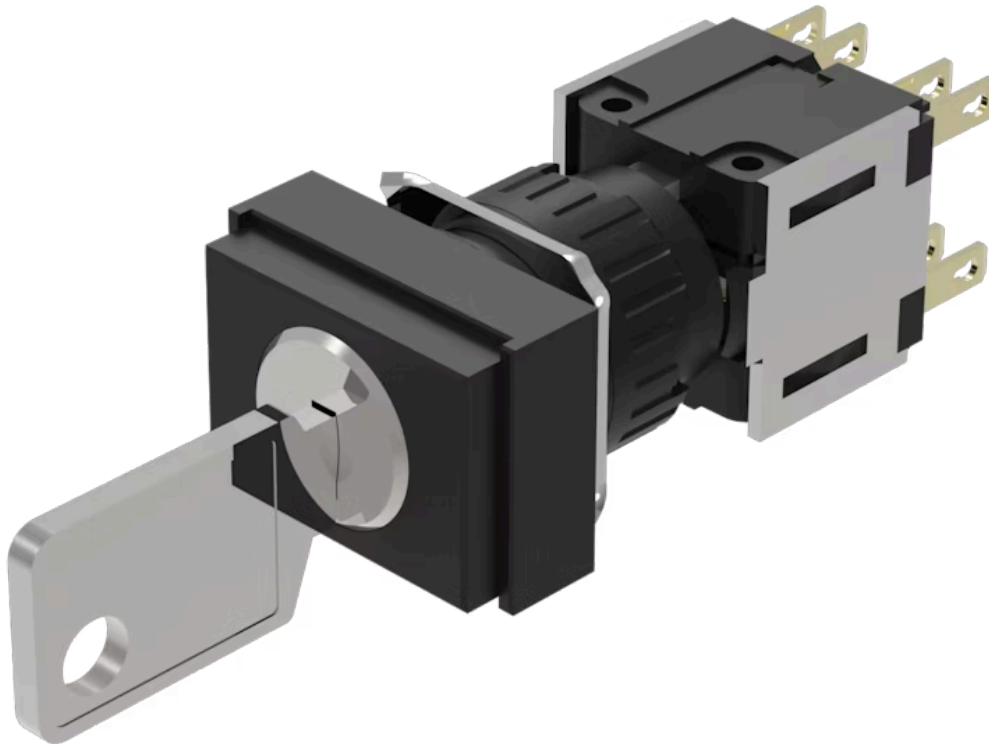


Actuator

51-
364.F22D

Distribution by
DigiKey

DigiKey



<https://digikey.eao.com/p/51-364.F22D>

Your product:



51-364.F22D Actuator

FRONT

Front dimension: 24 mm x 18 mm

MOUNTING

Design: raised

ELECTRICAL CHARACTERISTICS

Contacts: 2 NC / 2 NO

Protection class: II

Electric strength: 2500 VAC, 50 Hz, 1 min. between all terminals and earth, according to IEC 61058-1, part 15

Switching voltage and switching current: 250 VAC, 5 A ($\cos\phi$ 0.75)

Electrostatic discharge (ESD): ≤ 15 KV

Thermal current I_{th}: 5 A, according to EN / IEC 60947-5-1

MECHANICAL CHARACTERISTIC

Switching positions: 3 positions

Switching system: Self-cleaning, double-break snap action switching system, 2 normally closed and 2 normally open contact per element.

Mechanical lifetime: 50 000 cycles of operation

Switching action: Momentary - Rest (a) - Momentary

Weight: 0.025 kg

Contact material: Gold

Switching angle: 42° left / 42° right

Terminal:	Plug-in terminal, 2.8 x 0.5 mm
Switching system:	Snap-action switching element
Tightening torque:	Fixing nut max. 0.5 Nm
Wire cross section:	Max. wire cross-section 2 wires with 1 mm Max. wire cross-section of stranded cable 2 x 0.75 mm ²

AMBIENT CONDITION

IP front protection:	IP65, according to DIN EN 60529
Storage temperature:	- 40 °C ... + 85 °C
Operating temperature:	- 25 °C ... + 55 °C

CERTIFICATE

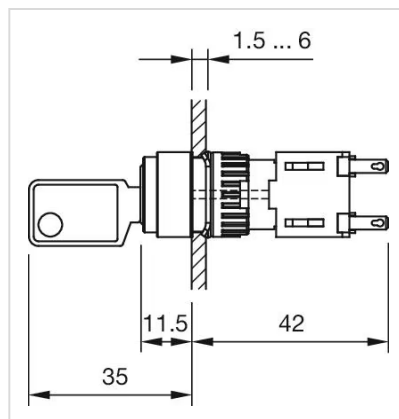
Approbations:	CB (IEC 61058-1), CQC, CSA, DNV, ENEC (EN 61058-1), UL
----------------------	--

OTHER

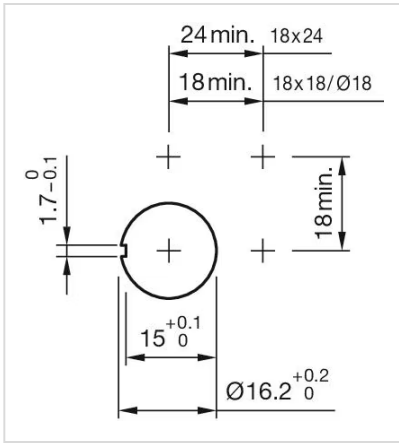
Hints:	Standard lock: DOM 311
---------------	------------------------

Short Description:	Actuator, 24 mm x 18 mm, 2 NC / 2 NO, Momentary - Rest (a) - Momentary, Plug-in terminal, 2.8 x 0.5 mm, IP65, according to DIN EN 60529
---------------------------	---

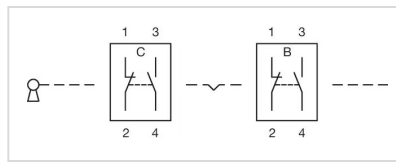
Dimension drawings:



Mounting cut-outs:



Wiring diagrams:



Switching positions:

