

# Actuator

51-  
264.0252

Distribution by  
DigiKey

**DigiKey**



<https://digikey.eao.com/p/51-264.0252>

Your product:

---



## 51-264.0252 Actuator

### FRONT

<b>Front dimension:</b>	24 mm x 18 mm
<b>Front bezel colour:</b>	Black
<b>Front bezel material:</b>	Plastic

### MOUNTING

<b>Design:</b>	raised
----------------	--------

### OPERATING-/INDICATION PART

<b>Lens illumination:</b>	illuminative
---------------------------	--------------

### ELECTRICAL CHARACTERISTICS

<b>Protection class:</b>	II
<b>Electrical lifetime:</b>	50 000 cycles of operation
<b>Switching voltage and switching current:</b>	250 VAC, 5 A (ohmic) 250 VAC, 3 A (Soldering terminal) 250 VAC, 2 A (inductive, $\cos(\phi) = 0.7$ ) 125 VAC, 3 A (inductive, $\cos(\phi) = 0.7$ ) 220 VDC, 0.1 A (inductive, L:R = 30 ms) 110 VDC, 0.2 A (inductive, L:R = 30 ms) 60 VDC, 0.7 A (inductive, L:R = 30 ms) 24 VDC, 2 A (inductive, L:R = 30 ms)
<b>Contacts:</b>	4 NC / 4 NO
<b>Electric strength:</b>	2500 VAC, 50 Hz, 1 min. between all terminals and earth, according to IEC 61058-1, part 15
<b>Thermal current I<sub>th</sub>:</b>	The maximum current in continuous operation and at ambient temperature not exceeding the quoted maximum values. 3 A
<b>Rated Operational Voltage U<sub>e</sub>:</b>	250 VAC/DC according to EN IEC 60947-1

**Standards:** According to EN/IEC 61058-1

### MECHANICAL CHARACTERISTIC

**Mechanical lifetime:** 1 Mio. cycles of operation

**Switching action:** Maintained

**Tightening torque:** Fixing nut max. 0.5 Nm

**Terminal:** Soldering terminal

**Contact material:** Gold

**Switching system:** Snap-action switching element

**Weight:** 0.012 kg

**Operating Travel:** 3 mm

**Wire cross section:** Snap-action switching element with tinned soldering terminals at the sides  
Max. wire diameter 2 wires à 1.2 mm  
Max. wire cross-section of stranded cable 1 x 1 mm<sup>2</sup>

**Operating force:** 1,8 ... 6 N, depending on the number of switching elements

**Switching system:** Self-cleaning, double-break snap action switching system, 1 normally closed and 1 normally open contact per element.

### AMBIENT CONDITION

**Climate resistance:** Standard condition, as per DIN EN 60068-2-30  
Changing condition, as per DIN EN 60068-2-14

**IP front protection:** IP65, according to DIN EN 60529

**Operating temperature:** – 25 °C ... + 55 °C, mounted as a block, make sure the heat can escape freely

**Shock resistance:** 15 g for 11 ms, as per DIN / EN 60512-4-3, DIN / EN 60068-2-27 (Single impacts, semi-sinusoidal)

**Vibration resistance:** 10 g at 10 Hz...1500 Hz, amplitude 0.75 mm (Sinusoidal), according to DIN EN 60512-4-4, DIN EN 60068-2-6

**Storage temperature:** – 40 °C ... + 85 °C

### CERTIFICATE

**Approbations:** CB (IEC 61058-1), CQC, CSA, DNV, EAC, ENEC (EN 61058-1), UL, VDE

**Conformities:** CE, UKCA, 2011 / 65 / EC (RoHS), 2014 / 30 / EU (EMC), 2014 / 35 / EU (LVD)

### OTHER

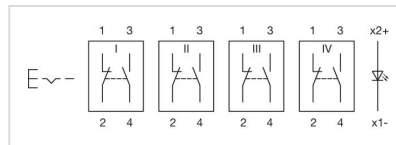
**max. number of switching elements:** 4

**Housing colour:** Black

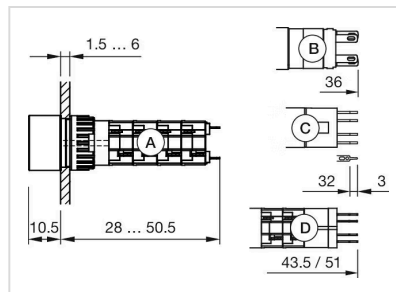
**Internal size:** 21,5 mm x 15,3 mm

**Short Description:** Actuator, 24 mm x 18 mm, illuminative, Black, Plastic, 4 NC / 4 NO, Maintained, Soldering terminal, IP65, according to DIN EN 60529

**Wiring diagrams:**



**Dimension drawings:**



A = Solder terminal  
B = Plug-in terminal 2.8 mm x 0.5 mm  
C = Universal terminal 2.0 mm x 0.5 mm  
D = Universal-Solder terminal

**Mounting cut-outs:**

