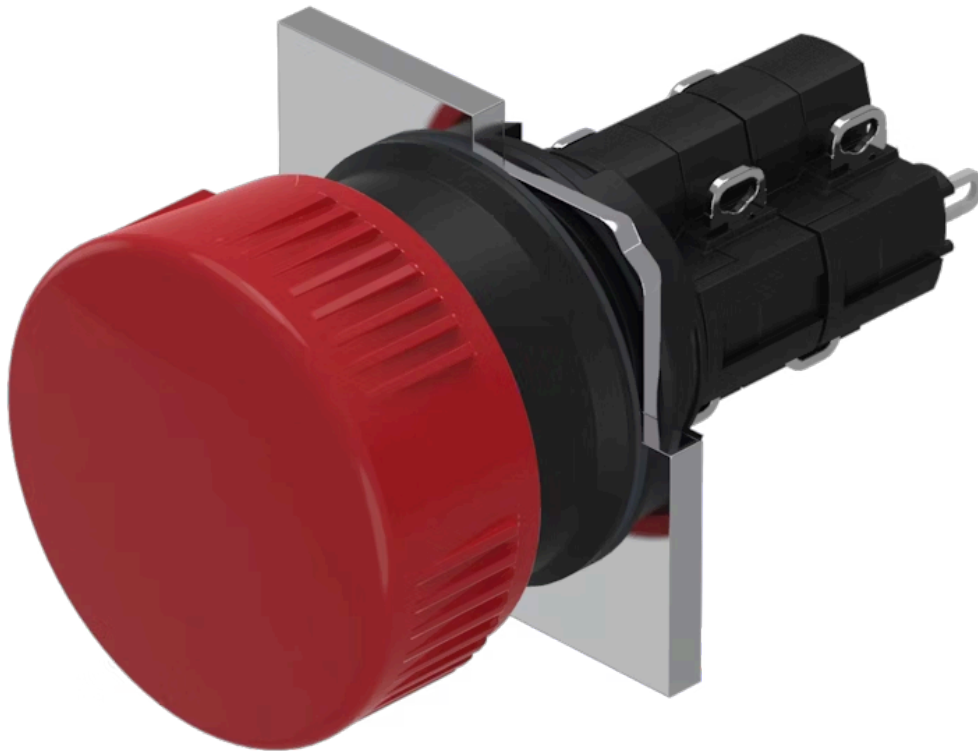


Actuator

51-
159.0252

Distribution by
DigiKey

DigiKey



<https://digikey.eao.com/p/51-159.0252>

Your product:



51-159.0252 Actuator

FRONT

Front bezel material:	Plastic
Front bezel colour:	Black
Front dimension:	Ø 24,5 mm

MOUNTING

Design:	raised
----------------	--------

OPERATING-/INDICATION PART

Lens colour:	Red
Lens optics:	opaque
Lens illumination:	non illuminative
Lens shape:	mushroom-head
Lens material:	Plastic

ELECTRICAL CHARACTERISTICS

Rated Operational Voltage U_e:	250 VAC/DC according to EN IEC 60947-1
Thermal current I_{th}:	The maximum current in continuous operation and at ambient temperature not exceeding the quoted maximum values. 3 A
Contacts:	2 NC / 2 NO
Standards:	According to EN/IEC 61058-1
Electrical lifetime:	50 000 cycles of operation
Protection class:	II
Electric strength:	

2500 VAC, 50 Hz, 1 min. between all terminals and earth, according to IEC 61058-1, part 15

Switching voltage and switching current:

- 250 VAC, 5 A (ohmic)
- 250 VAC, 3 A (Soldering terminal)
- 250 VAC, 2 A (inductive, $\cos(\phi) = 0.7$)
- 125 VAC, 3 A (inductive, $\cos(\phi) = 0.7$)
- 220 VDC, 0.1 A (inductive, L:R = 30 ms)
- 110 VDC, 0.2 A (inductive, L:R = 30 ms)
- 60 VDC, 0.7 A (inductive, L:R = 30 ms)
- 24 VDC, 2 A (inductive, L:R = 30 ms)

MECHANICAL CHARACTERISTIC

Terminal: Soldering terminal

Operating Travel: 3 mm

Weight: 0.011 kg

Switching system: Self-cleaning, double-break snap action switching system, 1 normally closed and 1 normally open contact per element.

Switching action: Momentary

Wire cross section: Snap-action switching element with tinned soldering terminals at the sides
Max. wire diameter 2 wires à 1.2 mm
Max. wire cross-section of stranded cable 1 x 1 mm²

Operating force: 1,8 ... 6 N, depending on the number of switching elements

Mechanical lifetime: 2 Mio. cycles of operation

Tightening torque: Fixing nut max. 0.5 Nm

Switching system: Snap-action switching element

Contact material: Gold

AMBIENT CONDITION

Operating temperature: - 25 °C ... + 55 °C

Climate resistance: Standard condition, as per DIN EN 60068-2-30
Changing condition, as per DIN EN 60068-2-14

Shock resistance: 15 g for 11 ms, as per DIN / EN 60512-4-3, DIN / EN 60068-2-27 (Single impacts, semi-sinusoidal)

Vibration resistance: 10 g at 10 Hz...1500 Hz, amplitude 0.75 mm (Sinusoidal), according to DIN EN 60512-4-4, DIN EN 60068-2-6

IP front protection: IP65, according to DIN EN 60529

Storage temperature: - 40 °C ... + 85 °C

CERTIFICATE

Conformities:

CE, UKCA, 2011 / 65 / EC (RoHS), 2014 / 30 / EU (EMC), 2014 / 35 / EU (LVD)

Approbations:

CB (IEC 61058-1), CQC, CSA, DNV, EAC, ENEC (EN 61058-1), UL, VDE

OTHER

max. number of switching elements:

2

Housing colour:

Black

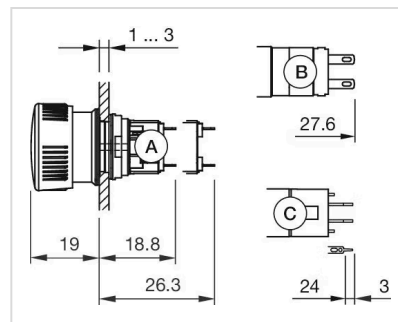
Short Description:

Actuator, Ø 24,5 mm, mushroom-head, non illuminative, Red, Plastic, opaque, Black, Plastic, 2 NC / 2 NO, Momentary, Soldering terminal, IP65, according to DIN EN 60529

Hints:

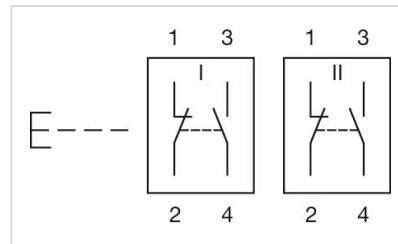
If the anti-twist ring is not used the panel thickness increases to 4 mm

Dimension drawings:



A = Solder terminal
B = Plug-in terminal 2.8 mm x 0.5 mm
C = Universal terminal 2.0 mm x 0.5 mm

Wiring diagrams:



Mounting cut-outs:

