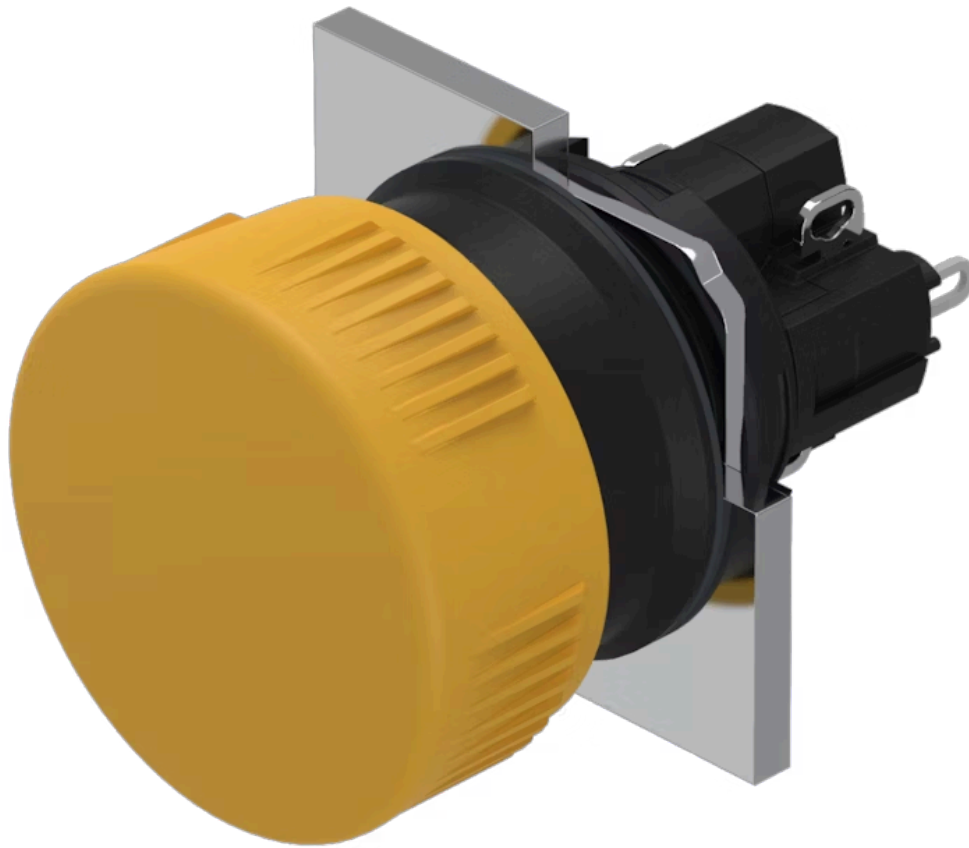


# Actuator

51-  
156.0254

Distribution by  
DigiKey

**DigiKey**



<https://digikey.eao.com/p/51-156.0254>

Your product:

---



## 51-156.0254 Actuator

### FRONT

|                              |           |
|------------------------------|-----------|
| <b>Front bezel material:</b> | Plastic   |
| <b>Front dimension:</b>      | Ø 24,5 mm |
| <b>Front bezel colour:</b>   | Black     |

### MOUNTING

|                |        |
|----------------|--------|
| <b>Design:</b> | raised |
|----------------|--------|

### OPERATING-/INDICATION PART

|                           |                  |
|---------------------------|------------------|
| <b>Lens optics:</b>       | opaque           |
| <b>Lens shape:</b>        | mushroom-head    |
| <b>Lens colour:</b>       | Yellow           |
| <b>Lens material:</b>     | Plastic          |
| <b>Lens illumination:</b> | non illuminative |

### ELECTRICAL CHARACTERISTICS

|                                                 |                                                                                                                                                                                                                                                                                                                                     |
|-------------------------------------------------|-------------------------------------------------------------------------------------------------------------------------------------------------------------------------------------------------------------------------------------------------------------------------------------------------------------------------------------|
| <b>Standards:</b>                               | According to EN/IEC 61058-1                                                                                                                                                                                                                                                                                                         |
| <b>Switching voltage and switching current:</b> | 250 VAC, 5 A (ohmic)<br>250 VAC, 3 A (Soldering terminal)<br>250 VAC, 2 A (inductive, $\cos(\phi) = 0.7$ )<br>125 VAC, 3 A (inductive, $\cos(\phi) = 0.7$ )<br>220 VDC, 0.1 A (inductive, L:R = 30 ms)<br>110 VDC, 0.2 A (inductive, L:R = 30 ms)<br>60 VDC, 0.7 A (inductive, L:R = 30 ms)<br>24 VDC, 2 A (inductive, L:R = 30 ms) |
| <b>Electrical lifetime:</b>                     | 50 000 cycles of operation                                                                                                                                                                                                                                                                                                          |
| <b>Rated Operational Voltage Ue:</b>            | 250 VAC/DC according to EN IEC 60947-1                                                                                                                                                                                                                                                                                              |

|                                        |                                                                                                                                                         |
|----------------------------------------|---------------------------------------------------------------------------------------------------------------------------------------------------------|
| <b>Electric strength:</b>              | 2500 VAC, 50 Hz, 1 min. between all terminals and earth, according to IEC 61058-1, part 15                                                              |
| <b>Thermal current I<sub>th</sub>:</b> | 5 A, according to EN / IEC 60947-5-1<br>The maximum current in continuous operation and at ambient temperature not exceeding the quoted maximum values. |
| <b>Protection class:</b>               | II                                                                                                                                                      |
| <b>Contacts:</b>                       | 1 NC / 1 NO                                                                                                                                             |

### MECHANICAL CHARACTERISTIC

|                             |                                                                                                                                                                                      |
|-----------------------------|--------------------------------------------------------------------------------------------------------------------------------------------------------------------------------------|
| <b>Operating force:</b>     | 4 N ... 6 N                                                                                                                                                                          |
| <b>Switching system:</b>    | Snap-action switching element                                                                                                                                                        |
| <b>Tightening torque:</b>   | Fixing nut max. 0.5 Nm                                                                                                                                                               |
| <b>Switching system:</b>    | Self-cleaning, double-break snap action switching system, 1 normally closed and 1 normally open contact per element.                                                                 |
| <b>Terminal:</b>            | Soldering terminal                                                                                                                                                                   |
| <b>Wire cross section:</b>  | Snap-action switching element with tinned soldering terminals at the sides<br>Max. wire diameter 2 wires à 1.2 mm<br>Max. wire cross-section of stranded cable 1 x 1 mm <sup>2</sup> |
| <b>Switching action:</b>    | Momentary                                                                                                                                                                            |
| <b>Contact material:</b>    | Gold                                                                                                                                                                                 |
| <b>Mechanical lifetime:</b> | 2 Mio. cycles of operation                                                                                                                                                           |
| <b>Weight:</b>              | 0.011 kg                                                                                                                                                                             |
| <b>Operating Travel:</b>    | 3 mm                                                                                                                                                                                 |

### AMBIENT CONDITION

|                               |                                                                                                          |
|-------------------------------|----------------------------------------------------------------------------------------------------------|
| <b>Climate resistance:</b>    | Standard condition, as per DIN EN 60068-2-30<br>Changing condition, as per DIN EN 60068-2-14             |
| <b>IP front protection:</b>   | IP65, according to DIN EN 60529                                                                          |
| <b>Storage temperature:</b>   | - 40 °C ... + 85 °C                                                                                      |
| <b>Operating temperature:</b> | - 25 °C ... + 55 °C                                                                                      |
| <b>Vibration resistance:</b>  | 10 g at 10 Hz...1500 Hz, amplitude 0.75 mm (Sinusoidal), according to DIN EN 60512-4-4, DIN EN 60068-2-6 |
| <b>Shock resistance:</b>      | 15 g for 11 ms, as per DIN / EN 60512-4-3, DIN / EN 60068-2-27 (Single impacts, semi-sinusoidal)         |

### CERTIFICATE

|                      |                                                        |
|----------------------|--------------------------------------------------------|
| <b>Approbations:</b> | CB (IEC 61058-1), CQC, CSA, DNV, ENEC (EN 61058-1), UL |
|----------------------|--------------------------------------------------------|

**Conformities:**

CE, UKCA, 2011 / 65 / EC (RoHS), 2014 / 30 / EU (EMC), 2014 / 35 / EU (LVD)

**OTHER**

**Housing colour:**

Black

**Short Description:**

Actuator, Ø 24,5 mm, mushroom-head, non illuminative, Yellow, Plastic, opaque, Black, Plastic, 1 NC / 1 NO, Momentary, Soldering terminal, IP65, according to DIN EN 60529

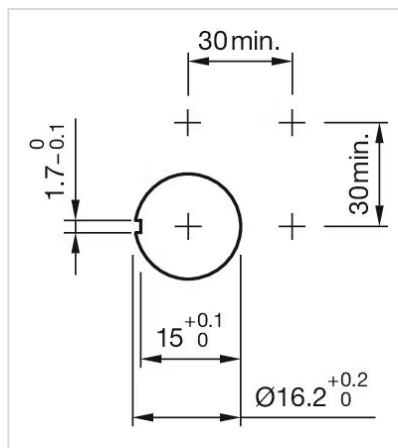
**Hints:**

If the anti-twist ring is not used the panel thickness increases to 4 mm

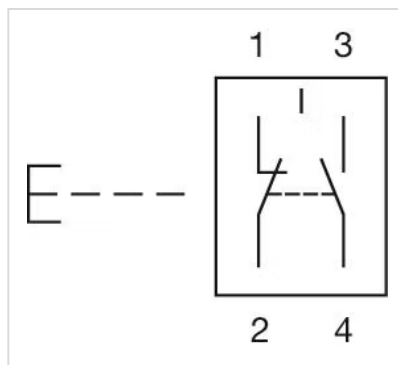
**max. number of switching elements:**

2

**Mounting cut-outs:**



**Wiring diagrams:**



**Dimension drawings:**

