

Actuator

46-
2W28.1CE0.001

Distribution by
DigiKey

DigiKey



<https://digkey.eao.com/p/46-2W28.1CE0.001>

Your product:



46-2W28.1CE0.001 Actuator

FRONT

| | |
|------------------------------|---------|
| Front dimension: | Ø 30 mm |
| Front bezel colour: | Black |
| Front form: | round |
| Front bezel material: | Plastic |

MOUNTING

| | |
|--------------------------|-----------|
| Mounting cut-out: | Ø 22.3 mm |
| Design: | raised |

OPERATING-/INDICATION PART

| | |
|--------------------------|---------|
| Lever bar colour: | Red |
| Lever material: | plastic |
| Lever shape: | short |
| Lever colour: | Red |

ELECTRICAL CHARACTERISTICS

| | |
|--------------------------|----|
| Protection class: | II |
|--------------------------|----|

MECHANICAL CHARACTERISTIC

| | |
|-----------------------------|-------------|
| Switching positions: | 2 positions |
| Weight: | 0.027 kg |
| Switching angle: | 90° |

Tightening torque: 2 ... 3 Nm (17.7 ... 26.6 Lb-in)
Mechanical lifetime: 1 Mio. cycles of operation
Switching action: Maintained - Maintained

AMBIENT CONDITION

Operating temperature: - 25 °C ... + 55 °C
Vibration resistance: 5g f= 2...500Hz (EN-IEC 60068-2-6)
IP front protection: IP65
Shock resistance: 30g, 18ms (EN-IEC 60068-2-27)
IK front protection: IK03
Climate resistance: +25°C-97%RH / +45°C-93%RH (IEC-EN60068-2-30)

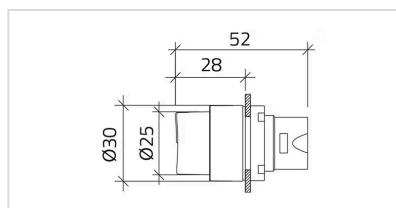
CERTIFICATE

Standards: CSA C22-2, IEC EN 60947-1, IEC EN 60947-5-1, UL508
Conformities: CE

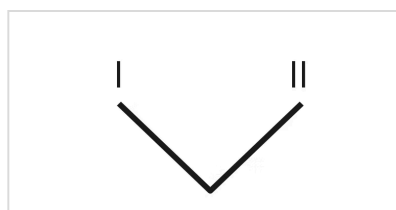
OTHER

Housing colour: Black
max. number of switching elements: 2
Short Description: Actuator, Ø 22.3 mm, Ø 30 mm, illuminative, Red, short, round, Black, Plastic, Maintained - Maintained, IP65, IK03
Housing material: Plastic

Dimension drawings:



Switching positions:



Mounting cut-outs:

