

Illumination element

45-320.1F11

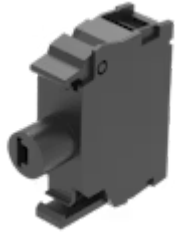
Distribution by
DigiKey

DigiKey



<https://digikey.eao.com/p/45-320.1F11>

Your product:



45-320.1F11 Illumination element

MOUNTING

Component mounting type: Front mounting

OPERATING-/INDICATION PART

Illumination colour: Amber

ELECTRICAL CHARACTERISTICS

Operating voltage: 6 - 24 V AC/DC

Lumi. Intensity: 450 - 1120 mcd

Surge voltage resistance: 4 kV

MECHANICAL CHARACTERISTIC

Terminal: Screw terminal

Weight: 0.01 kg

OTHER

Short Description: Illumination element, Screw terminal, Amber, 6 - 24 V AC/DC, Front mounting

Wiring diagrams:



Dimension drawings:

