

Actuator

45-
2H00.1016.000

Distribution by
DigiKey

DigiKey



<https://digikey.eao.com/component/45-2H00.101...>

Your product:



45-2H00.1016.000 Actuator

Loading ...

FRONT

Front dimension:	Ø 29,5 mm
Front form:	Round

MOUNTING

Design:	Raised
Mounting cut-out:	Ø 22.3 mm
Mounting type:	Panel mounting

ELECTRICAL CHARACTERISTICS

Operating voltage:	24 V AC/DC
Rated Operational Voltage U_e:	At AC: rated value 24 ... 24 V At DC: rated value 24 ... 24 V
Insulation voltage:	Rated value 320 V
Surge voltage resistance:	Rated value 4 kV
Pollution degree:	3

MECHANICAL CHARACTERISTICS

Terminal:	Screw terminal
Tightening torque:	0.8 ... 1 Nm for screw terminal
Terminal details 1:	– With end sleeves 2 x (0.5 ... 0.75 mm ²) – Without end sleeves 2 x (0.5 ... 1.5 mm ²) Solid
Terminal details 2:	– Without end sleeves 2 x (0.5 ... 0.75 mm ²) – With end sleeves 2 x (0.5 ... 1.5 mm ²) Finely stranded – For AWG cables for auxiliary contacts 2 x (18 ... 14)

Weight: 0.001 kg

ACOUSTICAL CHARACTERISTICS

Tone frequency: Approx. 2.4 kHz continuous tone only

Sound pressure: 95 db (A) \pm 8 dB at a distance of 0.1m

AMBIENT CONDITION

Operating temperature: – 25 °C ... + 70 °C

Storage temperature: – 40 °C ... + 80 °C

Shock resistance: According to IEC 60068-2-27: Sinusoidal half-wave 50 g / 11 ms

Vibration resistance: According to IEC 60068-2-6: 10 ... 500 Hz: 5 g

Climate resistance: During operation according to IEC 60721: 3B2, 3K6, 3S2, 3M6

CERTIFICATE

REACH: REACH compliant

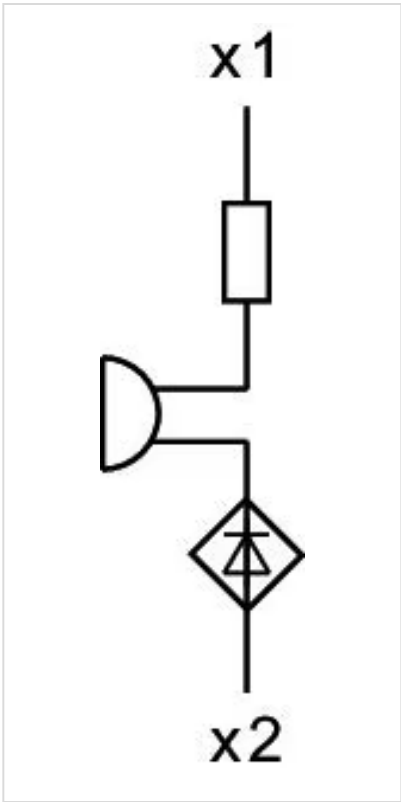
RoHS: RoHS compliant

OTHER

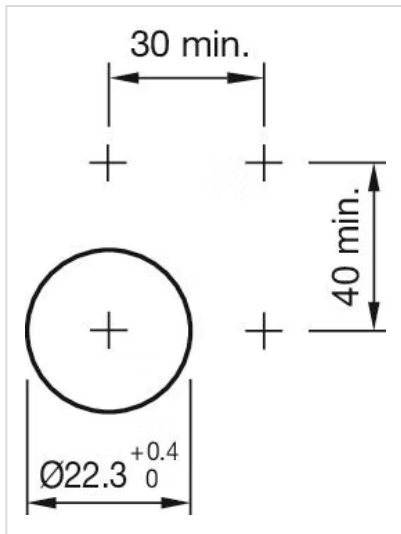
Short Description: Actuator, Ø 22.3 mm, Ø 29,5 mm, Round, Screw terminal

Housing material: Plastic

Wiring diagrams:



Mounting cut-outs:



Dimension drawings:

