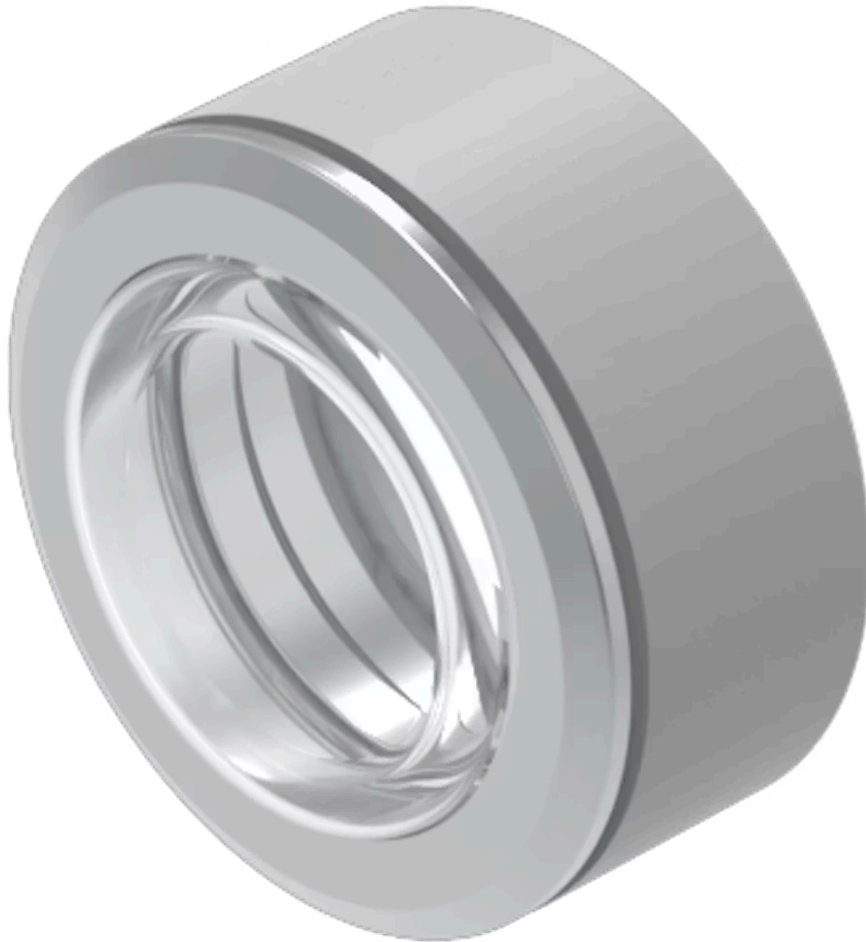


# Front bezel

14-955.9E

Distribution by  
DigiKey

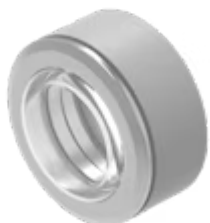
**DigiKey**



<https://digikey.eao.com/component/14-955.9E/e...>

Your product:

---



## 14-955.9E Front bezel

*Loading ...*

### FRONT

<b>Front dimension:</b>	Ø 35 mm
<b>Front form:</b>	Round
<b>Front bezel colour:</b>	Nature
<b>Front bezel material:</b>	Stainless steel
<b>Front bezel type:</b>	With transparent silicone membrane, resistant to sea water

### MOUNTING

<b>Mounting cut-out:</b>	Ø 30.5 mm
<b>Mounting type:</b>	Panel mounting

### MECHANICAL CHARACTERISTICS

<b>Weight:</b>	0.03 kg
----------------	---------

### CERTIFICATE

<b>REACH:</b>	REACH compliant
<b>RoHS:</b>	RoHS compliant

### OTHER

<b>Short Description:</b>	Front bezel, Ø 35 mm, Nature, Stainless steel
<b>Dimension:</b>	Ø 35 mm
<b>Housing colour:</b>	Black
<b>Housing material:</b>	Plastic

**Product attributes:**

With transparent silicone membrane, resistant to sea water

**Hints:**

Front bezel to be mounted with a torque of 0.4 Nm onto actuator  
Before assembling remove the flat gasket of the switch  
The colour of anodised aluminium parts can vary due to technical production reasons

**Mounting cut-outs:**

