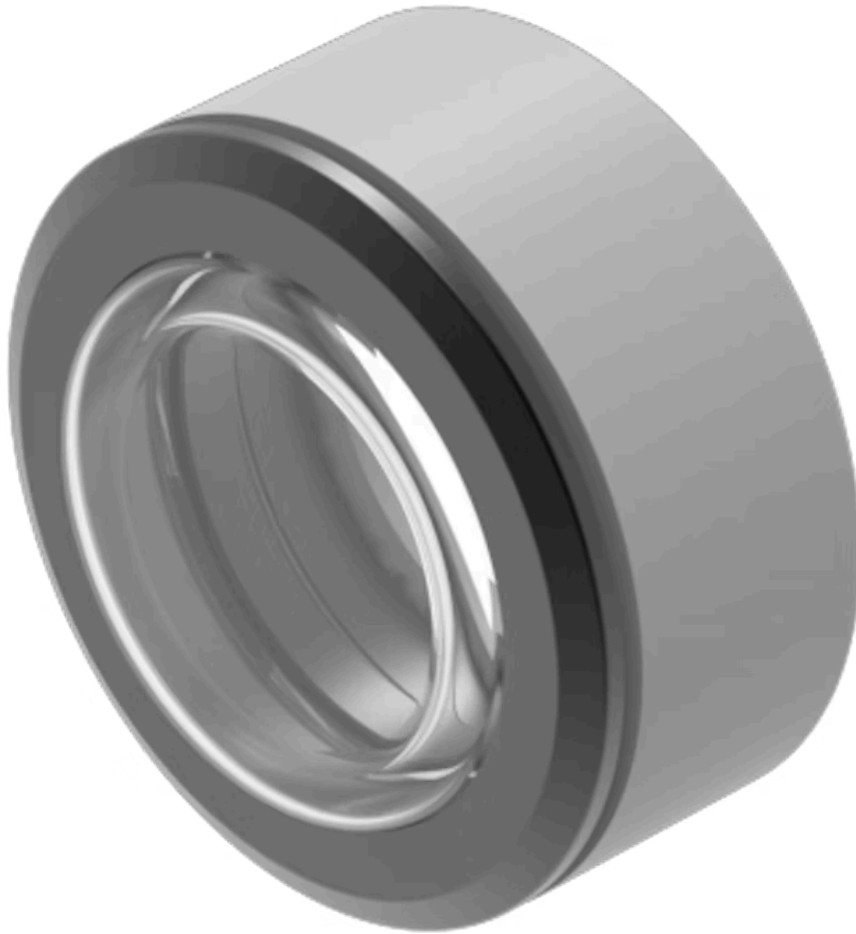


# Front bezel

14-955.4

Distribution by  
DigiKey

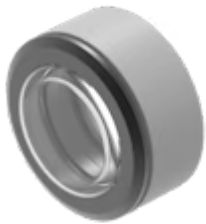
**DigiKey**



<https://digikey.eao.com/p/14-955.4>

Your product:

---



## 14-955.4 Front bezel

### FRONT

|                       |                                    |
|-----------------------|------------------------------------|
| Front dimension:      | Ø 35 mm                            |
| Front form:           | Round                              |
| Front bezel colour:   | Black                              |
| Front bezel material: | Aluminium                          |
| Front bezel type:     | With transparent silicone membrane |

### MOUNTING

|                   |                |
|-------------------|----------------|
| Mounting cut-out: | Ø 30.5 mm      |
| Mounting type:    | Panel mounting |

### MECHANICAL CHARACTERISTICS

|         |          |
|---------|----------|
| Weight: | 0.015 kg |
|---------|----------|

### CERTIFICATE

|        |                 |
|--------|-----------------|
| REACH: | REACH compliant |
| RoHS:  | RoHS compliant  |

### OTHER

|                    |  |
|--------------------|--|
| Short Description: | Front bezel, Ø 35 mm, Black, Aluminium |
| Dimension:         | Ø 35 mm                                |
| Housing colour:    | Black                                  |
| Housing material:  | Plastic                                |

**Product attributes:**

With transparent silicone membrane

**Hints:**

Front bezel to be mounted with a torque of 0.4 Nm onto actuator, Before assembling remove the flat gasket of the switch, The colour of anodised aluminium parts can vary due to technical production reasons

**Mounting cut-outs:**