

Actuator

14-
437.036K

Distribution by
DigiKey

DigiKey



<https://digikey.eao.com/p/14-437.036K>

Your product:



14-437.036K Actuator

FRONT

Front bezel material: Aluminium

Front bezel colour: Nature

ELECTRICAL CHARACTERISTICS

Contacts: 2 NO

Electric strength: 3000 VAC, 50 Hz, 1 min. between all terminals and earth, according to EN/IEC 61058-1

Protection class: II

Switching voltage and switching current: 100 mA at 42 VAC/VDC

MECHANICAL CHARACTERISTIC

Switching angle: 42° right

Operating force: 3 N ... 4 N, depending on the number of switching elements

Weight: 0.03 kg

Switching action: Rest (a) - Momentary

Switching system: This low-level switching element was designed for switching low powers in electronic circuits. The mechanism assures reliable switching of loads ranging from a few $\mu\text{A}/\mu\text{V}$ up to 100 mA/ 42 VAC/DC. Single-break momentary contact, as normally open or normally closed with 4 independent points of contact. 2 momentary contacts per switching element; combination of normally open and normally closed is possible. Special features are the long life, extremely short rebound time and stable contact resistance.

Switching system: Low-level element

Mechanical lifetime: 5 Mio. cycles of operation

Switching positions: 2 positions

Contact material: Gold

Tightening torque: Fixing nut max. 0.25 Nm

Terminal: Universal terminal, 2 x 0.5 mm

Wire cross section: Max. wire diameter 2 wires of 1 mm
Max. wire cross-section of stranded cable 2 x 0.75 mm²

AMBIENT CONDITION

Storage temperature: - 40 °C ... + 85 °C

Operating temperature: - 25 °C ... + 55 °C, mounted as a block, make sure the heat can escape freely

Shock resistance: Max. 150 m / s², pulse width 11 ms, 3-axis, (semi-sinusoidal as per EN IEC 60068-2-27)

IP front protection: IP65, according to DIN EN 60529

CERTIFICATE

Conformities: 2011 / 65 / EC (RoHS), 2014 / 35 / EU (LVD)

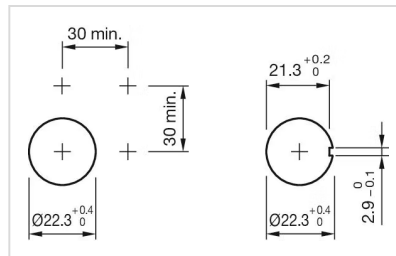
OTHER

Hints: Lock numbers 1001, lock type KABA

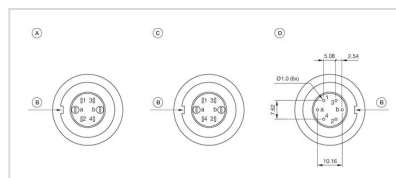
Housing colour: Black

Short Description: Actuator, Nature, Aluminium, anodised, 2 NO, Rest (a) - Momentary, Universal terminal, 2 x 0.5 mm, IP65, according to DIN EN 60529

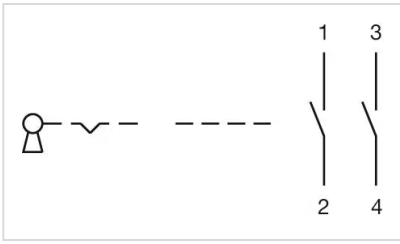
Mounting cut-outs:



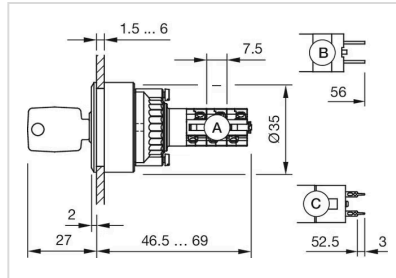
Component layouts:



Wiring diagrams:



Dimension drawings:



Switching positions:

