

Actuator

14-
274.0252

Distribution by
DigiKey

DigiKey



<https://digikey.eao.com/p/14-274.0252>

Your product:



14-274.0252 Actuator

OPERATING-/INDICATION PART

Lens illumination: illuminative

ELECTRICAL CHARACTERISTICS

Protection class: II

Contacts: 4 NC / 4 NO

Switching voltage and switching current:
250 VAC, 5 A (ohmic)
250 VAC, 3 A (Soldering terminal)
250 VAC, 2 A (inductive, $\cos(\phi) = 0.7$)
220 VDC, 0.1 A (inductive, L:R = 30 ms)
110 VDC, 0.2 A (inductive, L:R = 30 ms)
60 VDC, 0.7 A (inductive, L:R = 30 ms)
24 VDC, 2 A (inductive, L:R = 30 ms)

Thermal current I_{th}: The maximum current in continuous operation and at ambient temperature not exceeding the quoted maximum values.
3 A

Rated Operational Voltage U_e: 250 VAC/DC according to EN IEC 61058-1

Standards: According to EN/IEC 61058-1

Electric strength: 3000 VAC, 50 Hz, 1 min. between all terminals and earth, according to EN/IEC 61058-1

Electrical lifetime: 50 000 cycles of operation

MECHANICAL CHARACTERISTIC

Contact material: Gold

Switching action: Maintained

Switching system: Self-cleaning, double-break snap action switching system, 1 normally closed and 1 normally open contact per element.

Mechanical lifetime: 1 Mio. cycles of operation

Operating Travel: 3 mm

Switching system:	Snap-action switching element
Weight:	0.019 kg
Tightening torque:	Fixing nut max. 0.25 Nm
Operating force:	5 N ... 8 N, depending on the number of switching elements
Terminal:	Soldering terminal

AMBIENT CONDITION

Operating temperature:	- 25 °C ... + 55 °C, mounted as a block, make sure the heat can escape freely
Shock resistance:	Max. 150 m / s ² , pulse width 11 ms, 3-axis, (semi-sinusoidal as per EN IEC 60068-2-27)
Climate resistance:	Standard condition, as per DIN EN 60068-2-78 Standard cyclic, as per DIN IEC 60068-2-30
IP front protection:	IP67, according to DIN EN 60529
Storage temperature:	- 40 °C ... + 85 °C
Vibration resistance:	Max. 100 m / s ² from 10 Hz ... 500 Hz, (sinusoidal EN IEC 60068-2-6)

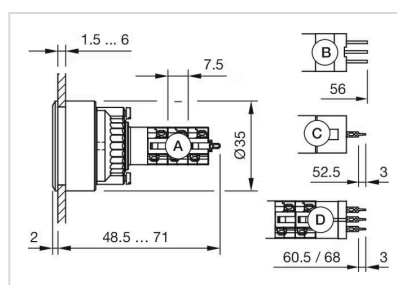
CERTIFICATE

Conformities:	CE, UKCA, 2011 / 65 / EC (RoHS), 2014 / 35 / EU (LVD)
Approbations:	CB (IEC 61058-1), CQC, CSA, DNV, EAC, ENEC (EN 61058-1), UL, VDE

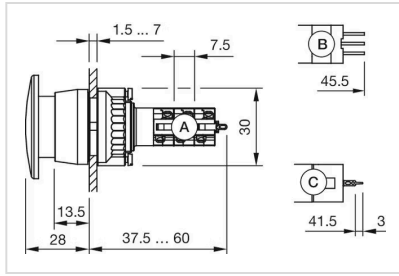
OTHER

max. number of switching elements:	4
Short Description:	Actuator, illuminative, 4 NC / 4 NO, Maintained, Soldering terminal, IP67, according to DIN EN 60529
Housing colour:	Black

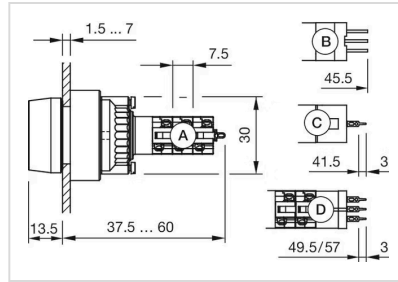
Dimension drawings:



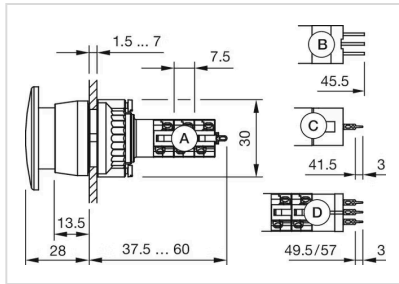
A = Solder terminal
 B = Plug-in terminal 2.8 x 0.5 mm
 C = Universal terminal 2.0 mm x 0.5 mm
 Universal-Solder terminal



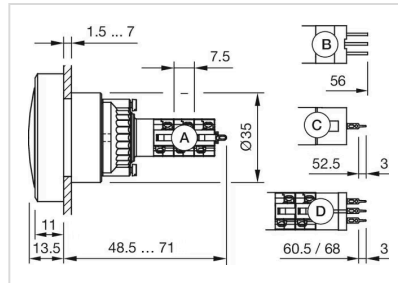
A = Solder terminal
 B = Plug-in terminal 2.8 x 0.5 mm
 C = Universal terminal 2.0 mm x 0.5 mm



A = Solder terminal
 B = Plug-in terminal 2.8 x 0.5 mm
 C = Universal terminal 2.0 mm x 0.5 mm
 D = Universal-Solder terminal

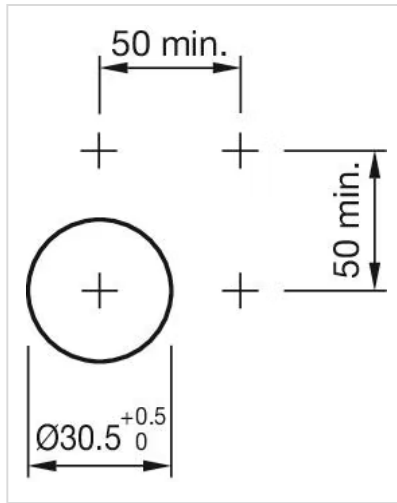
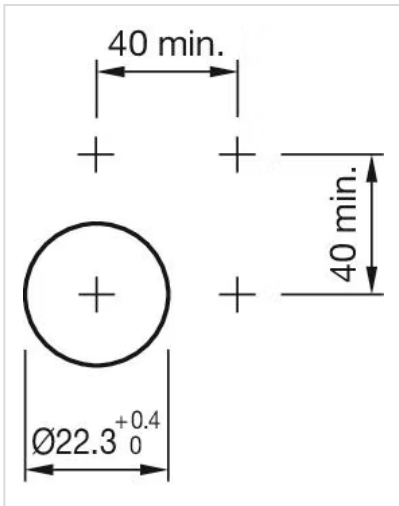
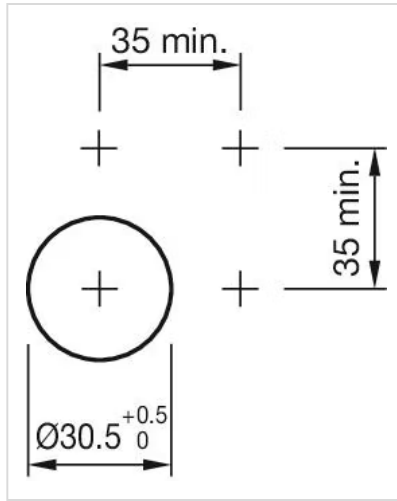
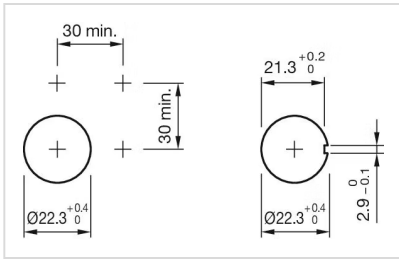


A = Solder terminal
 B = Plug-in terminal 2.8 x 0.5 mm
 C = Universal terminal 2.0 mm x 0.5 mm
 D = Universal-Solder terminal



A = Solder terminal
 B = Plug-in terminal 2.8 x 0.5 mm
 C = Universal terminal 2.0 mm x 0.5 mm
 D = Universal-Solder terminal

Mounting cut-outs:



Wiring diagrams:

