

# Actuator

14-  
142.025K2

Distribution by  
DigiKey

**DigiKey**



<https://digikey.eao.com/p/14-142.025K2>

Your product:

---



## 14-142.025K2 Actuator

### FRONT

**Front bezel material:** Aluminium

**Front bezel colour:** Nature

### ELECTRICAL CHARACTERISTICS

**Electric strength:** 3000 VAC, 50 Hz, 1 min. between all terminals and earth, according to EN/IEC 61058-1

**Thermal current I<sub>th</sub>:** 5 A, according to EN / IEC 60947-5-1  
The maximum current in continuous operation and at ambient temperature not exceeding the quoted maximum values.

**Electrical lifetime:** 50 000 cycles of operation

**Rated Operational Voltage U<sub>e</sub>:** 250 VAC/DC according to EN IEC 61058-1

**Protection class:** II

**Switching voltage and switching current:**  
250 VAC, 5 A (ohmic)  
250 VAC, 2 A (inductive, cos(phi) = 0.7)  
220 VDC, 0.1 A (inductive, L:R = 30 ms)  
110 VDC, 0.2 A (inductive, L:R = 30 ms)  
60 VDC, 0.7 A (inductive, L:R = 30 ms)  
24 VDC, 2 A (inductive, L:R = 30 ms)

**Standards:** According to EN/IEC 61058-1

**Contacts:** 2 NC / 2 NO

### MECHANICAL CHARACTERISTIC

**Weight:** 0.031 kg

**Switching system:** Snap-action switching element

**Switching angle:** 42° right

**Operating force:** 3 N ... 6 N, depending on the number of switching elements

**Switching positions:** 2 positions

<b>Operating Travel:</b>	ca. 42°
<b>Tightening torque:</b>	Fixing nut max. 0.25 Nm
<b>Switching action:</b>	Rest (a) - Momentary
<b>Switching system:</b>	Self-cleaning, double-break snap action switching system, 1 normally closed and 1 normally open contact per element.
<b>Contact material:</b>	Gold
<b>Terminal:</b>	Soldering terminal
<b>Mechanical lifetime:</b>	2 Mio. cycles of operation

### AMBIENT CONDITION

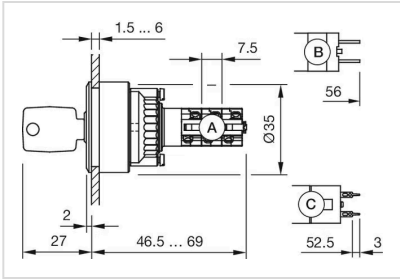
<b>Operating temperature:</b>	- 25 °C ... + 55 °C, mounted as a block, make sure the heat can escape freely
<b>Shock resistance:</b>	Max. 150 m / s <sup>2</sup> , pulse width 11 ms, 3-axis, (semi-sinusoidal as per EN IEC 60068-2-27)
<b>IP front protection:</b>	IP65, according to DIN EN 60529
<b>Storage temperature:</b>	- 40 °C ... + 85 °C
<b>Climate resistance:</b>	Standard condition, as per DIN EN 60068-2-78 Standard cyclic, as per DIN IEC 60068-2-30
<b>Vibration resistance:</b>	Max. 100 m / s <sup>2</sup> from 10 Hz ... 500 Hz, (sinusoidal EN IEC 60068-2-6)

### CERTIFICATE

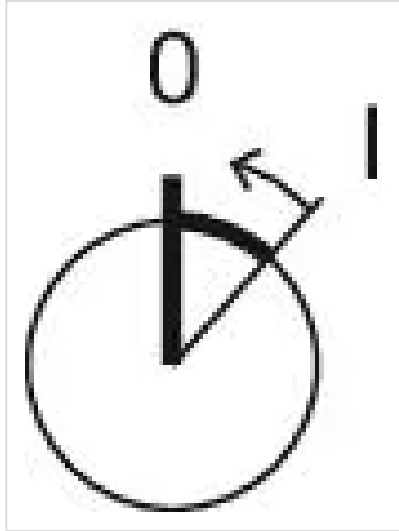
<b>Approbations:</b>	CB (IEC 61058-1), CQC, CSA, DNV, ENEC (EN 61058-1), UL
<b>Conformities:</b>	CE, UKCA, 2011 / 65 / EC (RoHS), 2014 / 35 / EU (LVD)

### OTHER

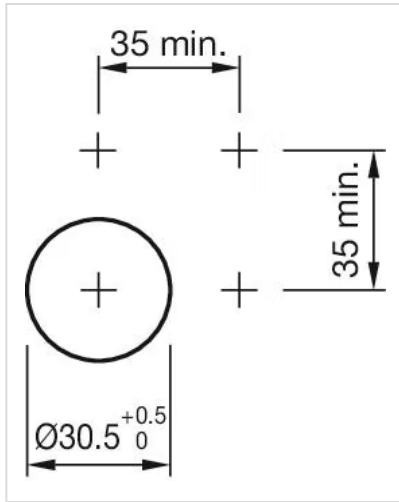
<b>max. number of switching elements:</b>	2
<b>Hints:</b>	Lock numbers 1001, lock type KABA
<b>Housing colour:</b>	Black
<b>Short Description:</b>	Actuator, Nature, Aluminium, anodised, 2 NC / 2 NO, Rest (a) - Momentary, Soldering terminal, IP65, according to DIN EN 60529
<b>Dimension drawings:</b>	



**Switching positions:**



**Mounting cut-outs:**



**Wiring diagrams:**

