

Actuator

14-
138.025K2

Distribution by
DigiKey

DigiKey



<https://digikey.eao.com/p/14-138.025K2>

Your product:



14-138.025K2 Actuator

FRONT

Front bezel colour: Nature

Front bezel material: Aluminium

ELECTRICAL CHARACTERISTICS

Electrical lifetime: 50 000 cycles of operation

Rated Operational Voltage U_e : 250 VAC/DC according to EN IEC 61058-1

Standards: According to EN/IEC 61058-1

Contacts: 4 NC / 4 NO

Electric strength: 3000 VAC, 50 Hz, 1 min. between all terminals and earth, according to EN/IEC 61058-1

Switching voltage and switching current:
250 VAC, 5 A (ohmic)
250 VAC, 2 A (inductive, $\cos(\phi) = 0.7$)
220 VDC, 0.1 A (inductive, L:R = 30 ms)
110 VDC, 0.2 A (inductive, L:R = 30 ms)
60 VDC, 0.7 A (inductive, L:R = 30 ms)
24 VDC, 2 A (inductive, L:R = 30 ms)

Thermal current I_{th} : 5 A, according to EN / IEC 60947-5-1
The maximum current in continuous operation and at ambient temperature not exceeding the quoted maximum values.

Protection class: II

MECHANICAL CHARACTERISTIC

Switching angle: 90° right

Tightening torque: Fixing nut max. 0.25 Nm

Switching system: Self-cleaning, double-break snap action switching system, 1 normally closed and 1 normally open contact per element.

Operating force: 5 N ... 8 N, depending on the number of switching elements

Switching action:	Rest (a) - Maintained (a)
Switching system:	Snap-action switching element
Switching positions:	2 positions
Mechanical lifetime:	1 Mio. cycles of operation
Operating Travel:	ca. 90°
Contact material:	Gold
Weight:	0.035 kg
Terminal:	Soldering terminal

AMBIENT CONDITION

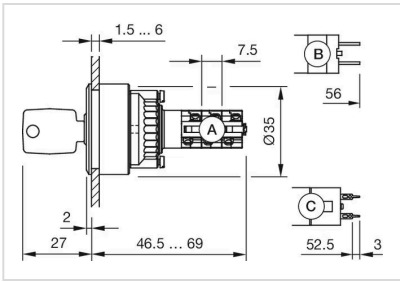
Vibration resistance:	Max. 100 m / s ² from 10 Hz ... 500 Hz, (sinusoidal EN IEC 60068-2-6)
Operating temperature:	- 25 °C ... + 55 °C, mounted as a block, make sure the heat can escape freely
Storage temperature:	- 40 °C ... + 85 °C
Climate resistance:	Standard condition, as per DIN EN 60068-2-78 Standard cyclic, as per DIN IEC 60068-2-30
IP front protection:	IP65, according to DIN EN 60529
Shock resistance:	Max. 150 m / s ² , pulse width 11 ms, 3-axis, (semi-sinusoidal as per EN IEC 60068-2-27)

CERTIFICATE

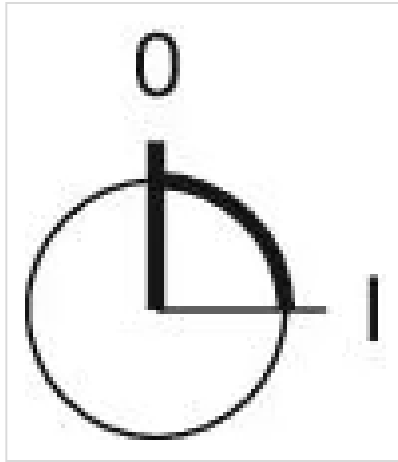
Conformities:	CE, UKCA, 2011 / 65 / EC (RoHS), 2014 / 35 / EU (LVD)
Approbations:	CB (IEC 61058-1), CQC, CSA, DNV, ENEC (EN 61058-1), UL

OTHER

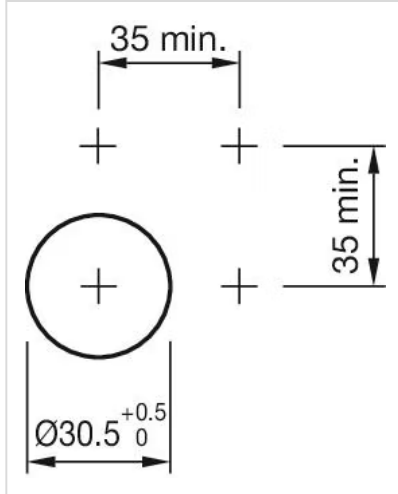
Hints:	Lock numbers 1001, lock type KABA
Short Description:	Actuator, Nature, Aluminium, anodised, 4 NC / 4 NO, Rest (a) - Maintained (a), Soldering terminal, IP65, according to DIN EN 60529
max. number of switching elements:	4
Housing colour:	Black
Dimension drawings:	



Switching positions:



Mounting cut-outs:



Wiring diagrams:

