

Actuator

14-
135.025K2

Distribution by
DigiKey

DigiKey



<https://digikey.eao.com/p/14-135.025K2>

Your product:



14-135.025K2 Actuator

FRONT

Front bezel material: Aluminium

Front bezel colour: Nature

ELECTRICAL CHARACTERISTICS

Contacts: 1 NC / 1 NO

Electrical lifetime: 50 000 cycles of operation

Protection class: II

Rated Operational Voltage Ue: 250 VAC/DC according to EN IEC 61058-1

Thermal current Ith: 5 A, according to EN / IEC 60947-5-1
The maximum current in continuous operation and at ambient temperature not exceeding the quoted maximum values.

Switching voltage and switching current:
250 VAC, 5 A (ohmic)
250 VAC, 2 A (inductive, $\cos(\phi) = 0.7$)
220 VDC, 0.1 A (inductive, L:R = 30 ms)
110 VDC, 0.2 A (inductive, L:R = 30 ms)
60 VDC, 0.7 A (inductive, L:R = 30 ms)
24 VDC, 2 A (inductive, L:R = 30 ms)

Electric strength: 3000 VAC, 50 Hz, 1 min. between all terminals and earth, according to EN/IEC 61058-1

Standards: According to EN/IEC 61058-1

MECHANICAL CHARACTERISTIC

Tightening torque: Fixing nut max. 0.25 Nm

Mechanical lifetime: 1 Mio. cycles of operation

Switching system: Self-cleaning, double-break snap action switching system, 1 normally closed and 1 normally open contact per element.

Weight: 0.029 kg

Switching system:	Snap-action switching element
Switching angle:	90° right
Contact material:	Gold-plated silver
Operating Travel:	ca. 90°
Terminal:	Soldering terminal
Switching positions:	2 positions
Operating force:	5 N ... 8 N, depending on the number of switching elements
Switching action:	Rest (a) - Maintained (a)

AMBIENT CONDITION

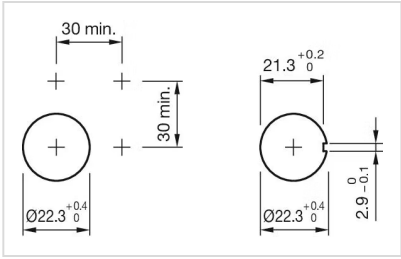
Climate resistance:	Standard condition, as per DIN EN 60068-2-78 Standard cyclic, as per DIN IEC 60068-2-30
Vibration resistance:	Max. 100 m / s ² from 10 Hz ... 500 Hz, (sinusoidal EN IEC 60068-2-6)
Shock resistance:	Max. 150 m / s ² , pulse width 11 ms, 3-axis, (semi-sinusoidal as per EN IEC 60068-2-27)
Operating temperature:	- 25 °C ... + 55 °C, mounted as a block, make sure the heat can escape freely
IP front protection:	IP65, according to DIN EN 60529
Storage temperature:	- 40 °C ... + 85 °C

CERTIFICATE

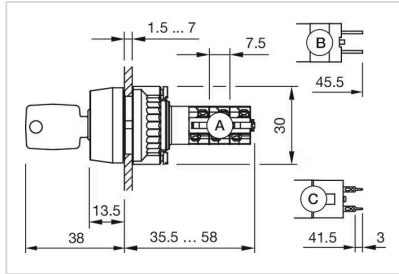
Approbations:	CB (IEC 61058-1), CQC, CSA, DNV, ENEC (EN 61058-1), UL
Conformities:	CE, UKCA, 2011 / 65 / EC (RoHS), 2014 / 35 / EU (LVD)

OTHER

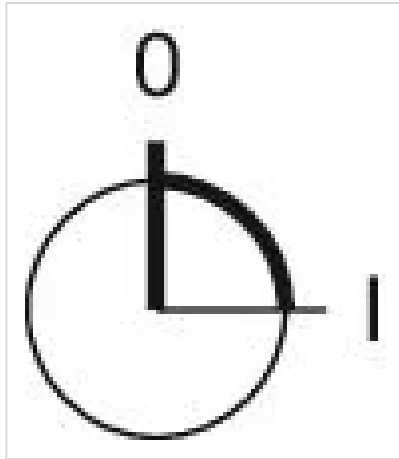
Hints:	Lock numbers 1001, lock type KABA
Short Description:	Actuator, Nature, Aluminium, anodised, 1 NC / 1 NO, Rest (a) - Maintained (a), Soldering terminal, IP65, according to DIN EN 60529
max. number of switching elements:	1
Housing colour:	Black
Mounting cut-outs:	



Dimension drawings:



Switching positions:



Wiring diagrams:

