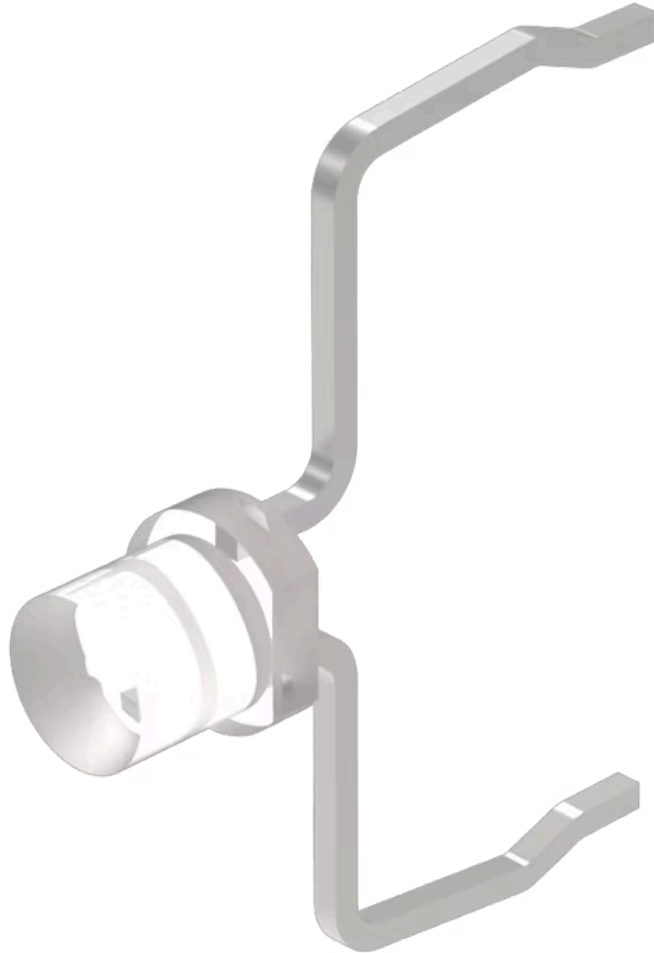


Single- LED

10-
2603.3178S

Distribution by
DigiKey

DigiKey



<https://digikey.eao.com/component/10-2603.317...>

Your product:



10-2603.3178S Single-LED

Loading . . .

OPERATING-/INDICATION PART

Illumination colour: White

ELECTRICAL CHARACTERISTICS

Forward voltage: 3.2 V DC @ 20 mA

Operating voltage: 2 - 6 V DC

Lumi. Intensity: 500 mcd

MECHANICAL CHARACTERISTICS

Weight: 0 kg

CERTIFICATE

REACH: REACH compliant

RoHS: RoHS compliant

OTHER

Short Description: Single-LED, T1 Bi-Pin, White, 2 - 6 V DC

Kind of illumination: Single-LED

Hints: The customer has to decide what series resistor shall be used to the LED. Luminosity and wave length variations caused by LED manufacturing processes may cause slight differences regarding the illumination. The customer has to decide what resistor shall be used to the LED.

Wiring diagrams:



Component layouts:

