

Single- LED

10-
2412.1089P

Distribution by
DigiKey

DigiKey

<https://digikey.eao.com/component/10-2412.108...>

Your product:



10-2412.1089P Single-LED

OPERATING-/INDICATION PART

Illumination colour: White

ELECTRICAL CHARACTERISTICS

Operating voltage: 24 V AC/DC -30% / +25%

Operation current: 7,5 mA -30%/+25%

Lumi. Intensity: 700 mcd

MECHANICAL CHARACTERISTICS

Weight: 0.001 kg

CERTIFICATE

REACH: REACH compliant

RoHS: RoHS compliant

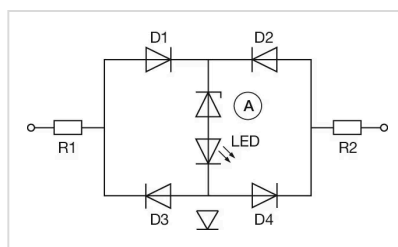
OTHER

Short Description: Single-LED, BA9s, White, 24 V AC/DC -30% / +25%

Kind of illumination: Multi-LED EN 50155

Hints: A suitable LED remover Part No. 700.006.0
The luminous intensity stated is for when used with DC
Electrical and optical data are measured at 25 °C
The specified 24 VAC/VDC versions are built with a protection diode
Specified 24 VAC/VDC versions are built with a bridge rectifier
The new, white BA9s LED operates within a range of 16VDC to 34VDC. It conforms to the norms EN 50155 and IEEE 1476
Luminosity and wave length variations caused by LED manufacturing processes may cause slight differences regarding the illumination. The customer has to decide what resistor shall be used to the LED

Wiring diagrams:



Dimension drawings:

